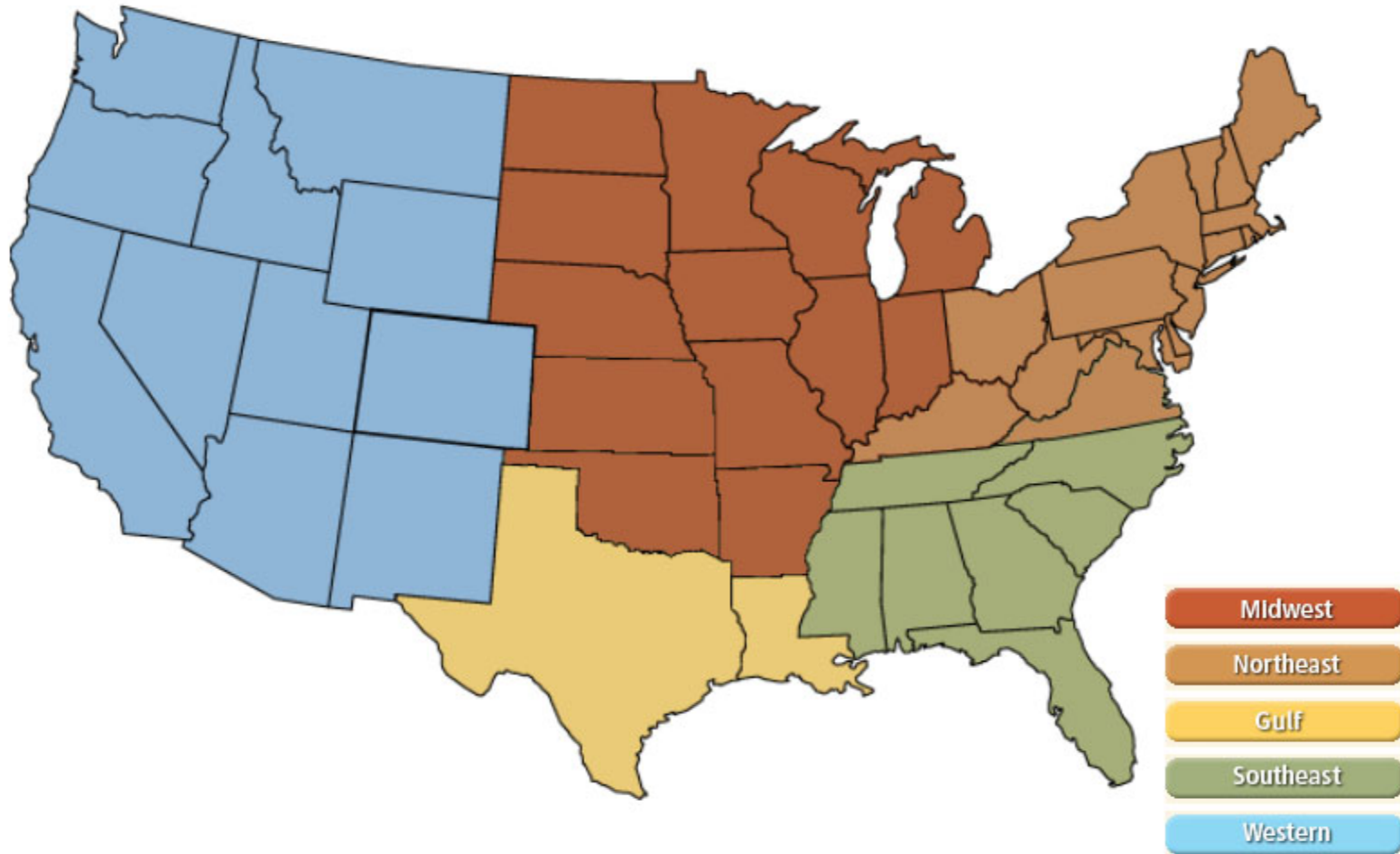


National

Federal Energy Regulatory Commission **Market Assessments**



NOAA 3 Month Outlook

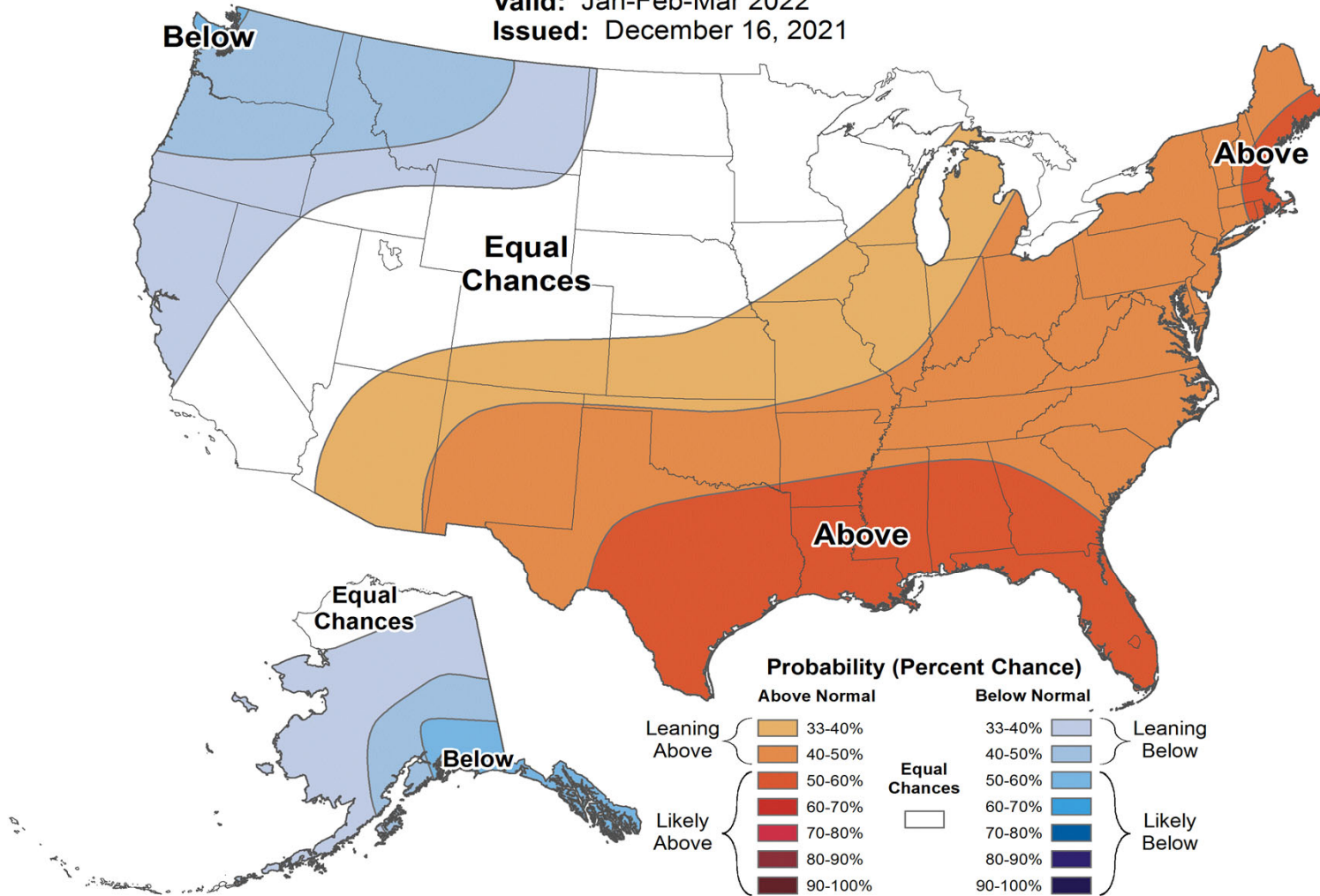
Federal Energy Regulatory Commission **Market Assessments**



Seasonal Temperature Outlook



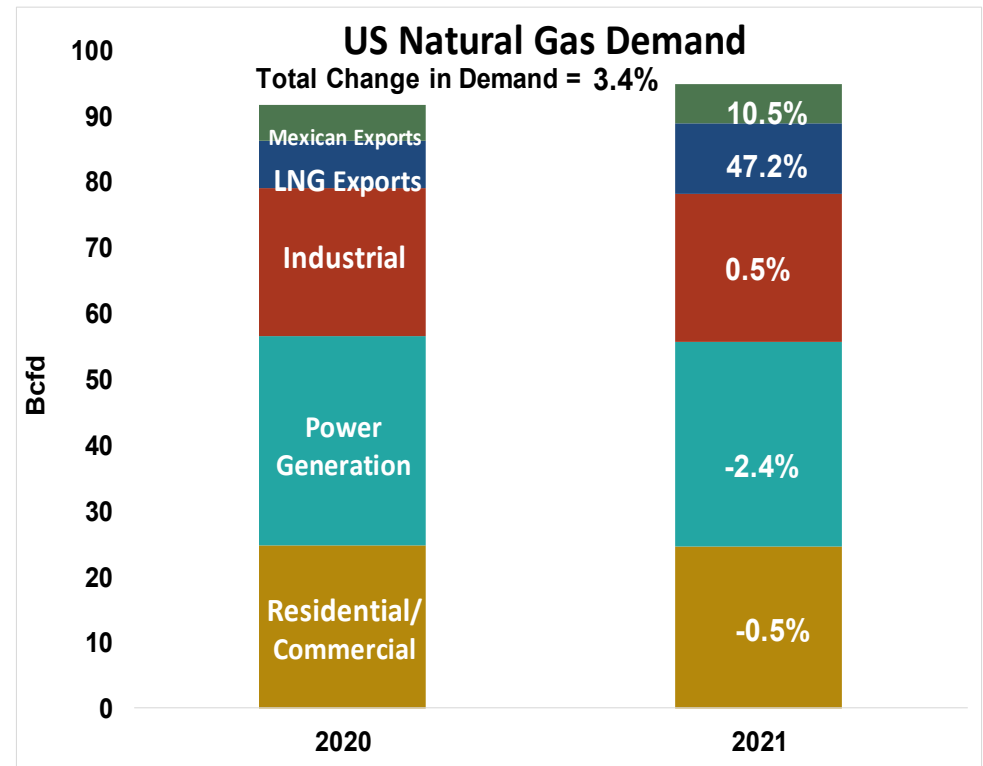
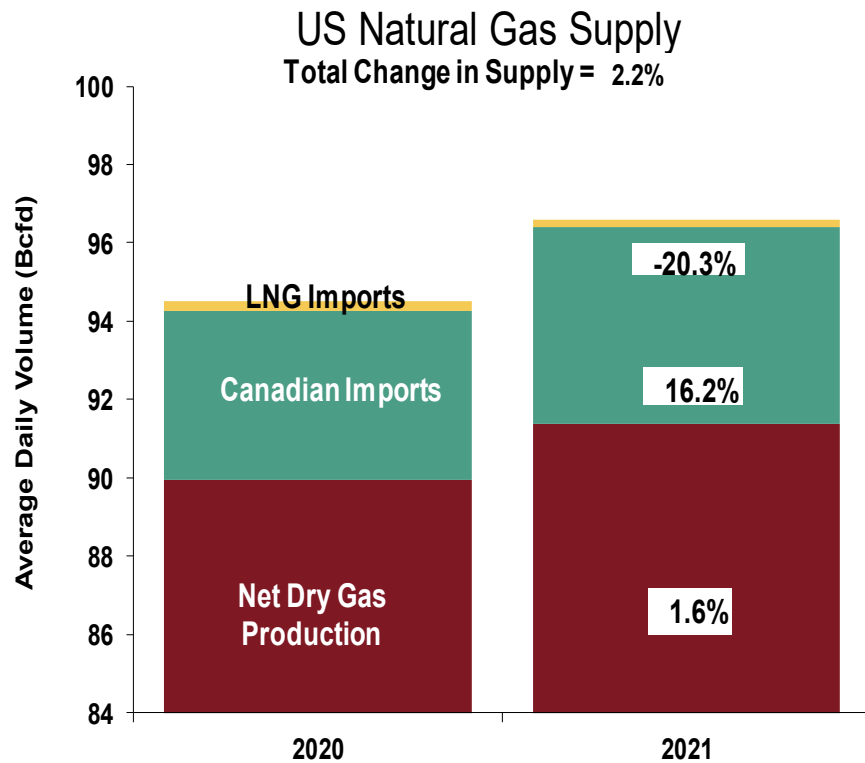
Valid: Jan-Feb-Mar 2022
Issued: December 16, 2021



National Natural Gas Market Overview: U.S. Supply and Consumption

U.S. NG Supply and Demand Dec-20 YTD vs. Dec-21 YTD

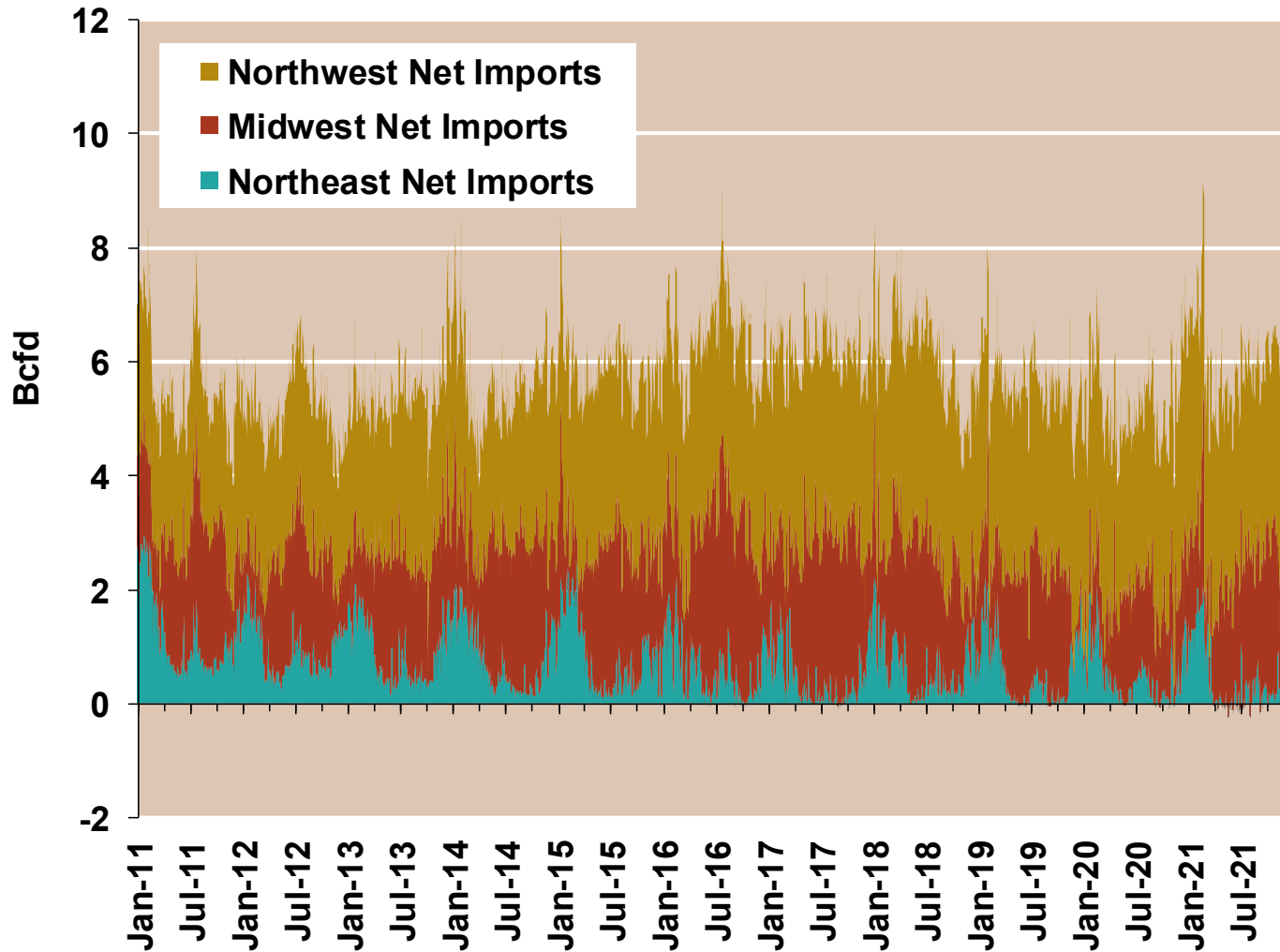
Federal Energy Regulatory Commission Market Assessments



Note: Balance includes all amounts not attributable to other categories.
 Source: Derived from S&P Global Bentek Energy data

Regional Canadian Imports

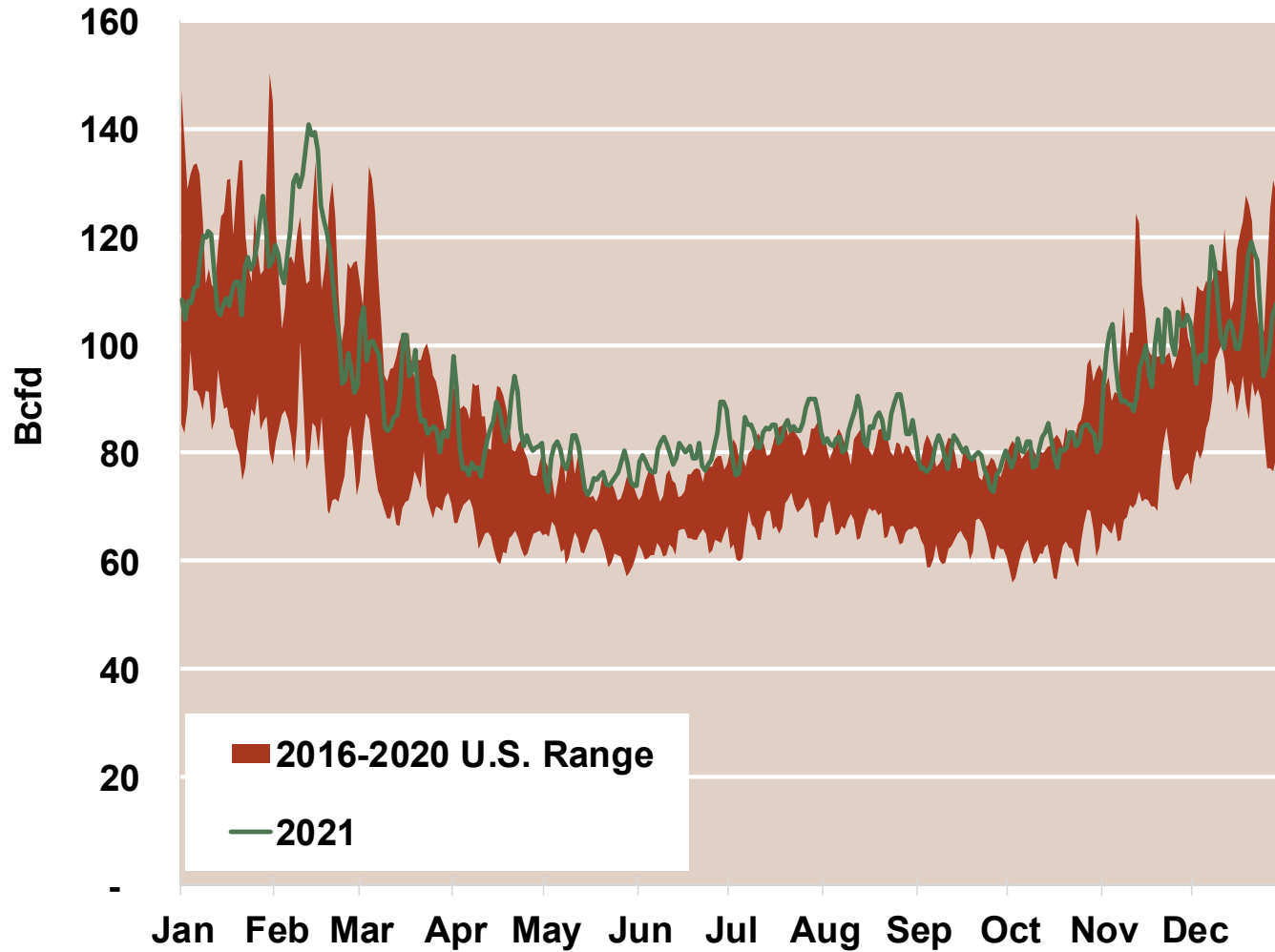
Federal Energy Regulatory Commission **Market Assessments**



National Natural Gas Market Overview: Total US Gas Demand

Total U.S. Natural Gas Demand All Sectors

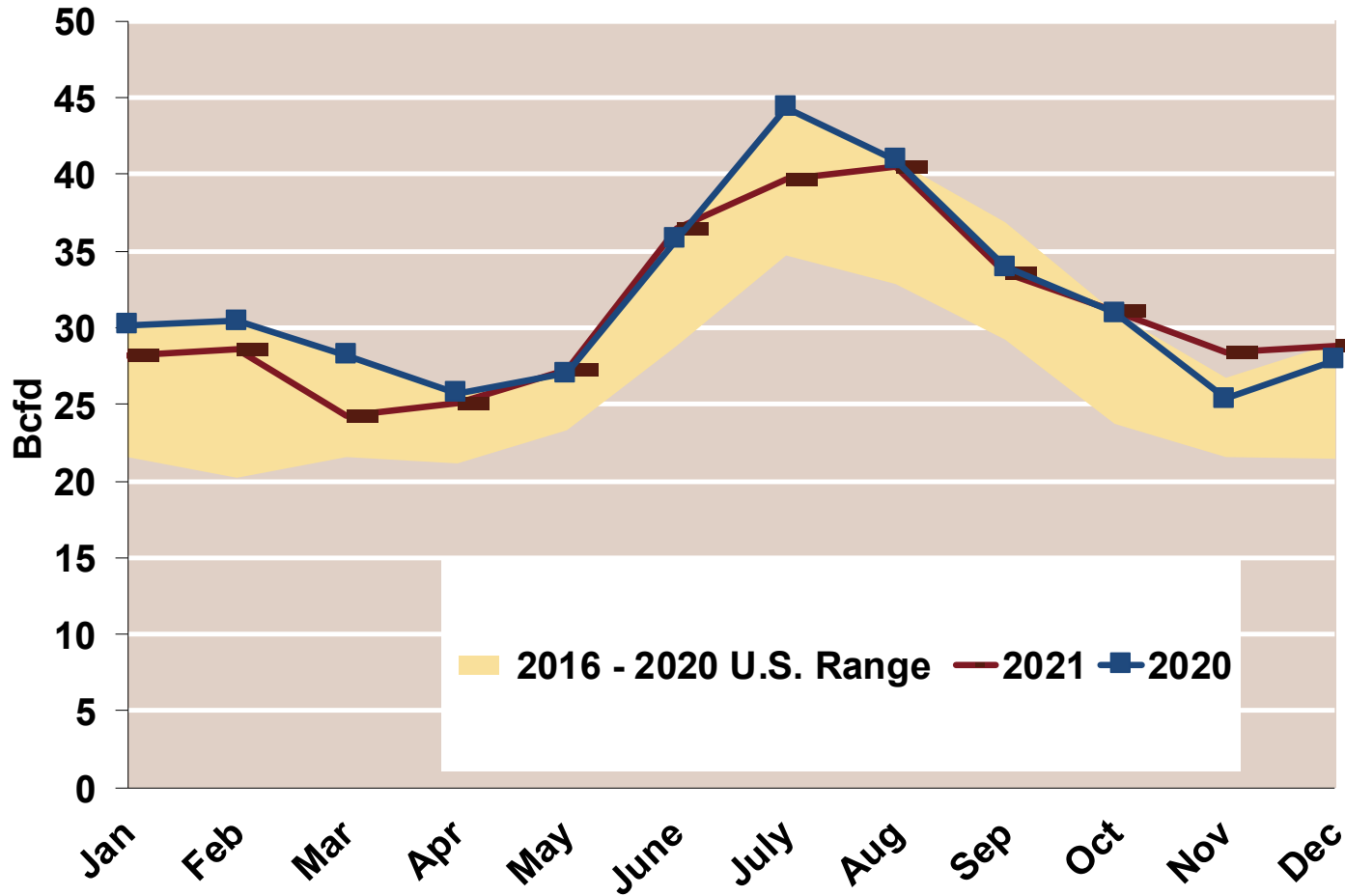
Federal Energy Regulatory Commission Market Assessments



Source: Derived from S&P Global Bentek Energy data, derived from interstate pipeline flow and modeled data.

U.S. Natural Gas Consumption for Power Generation

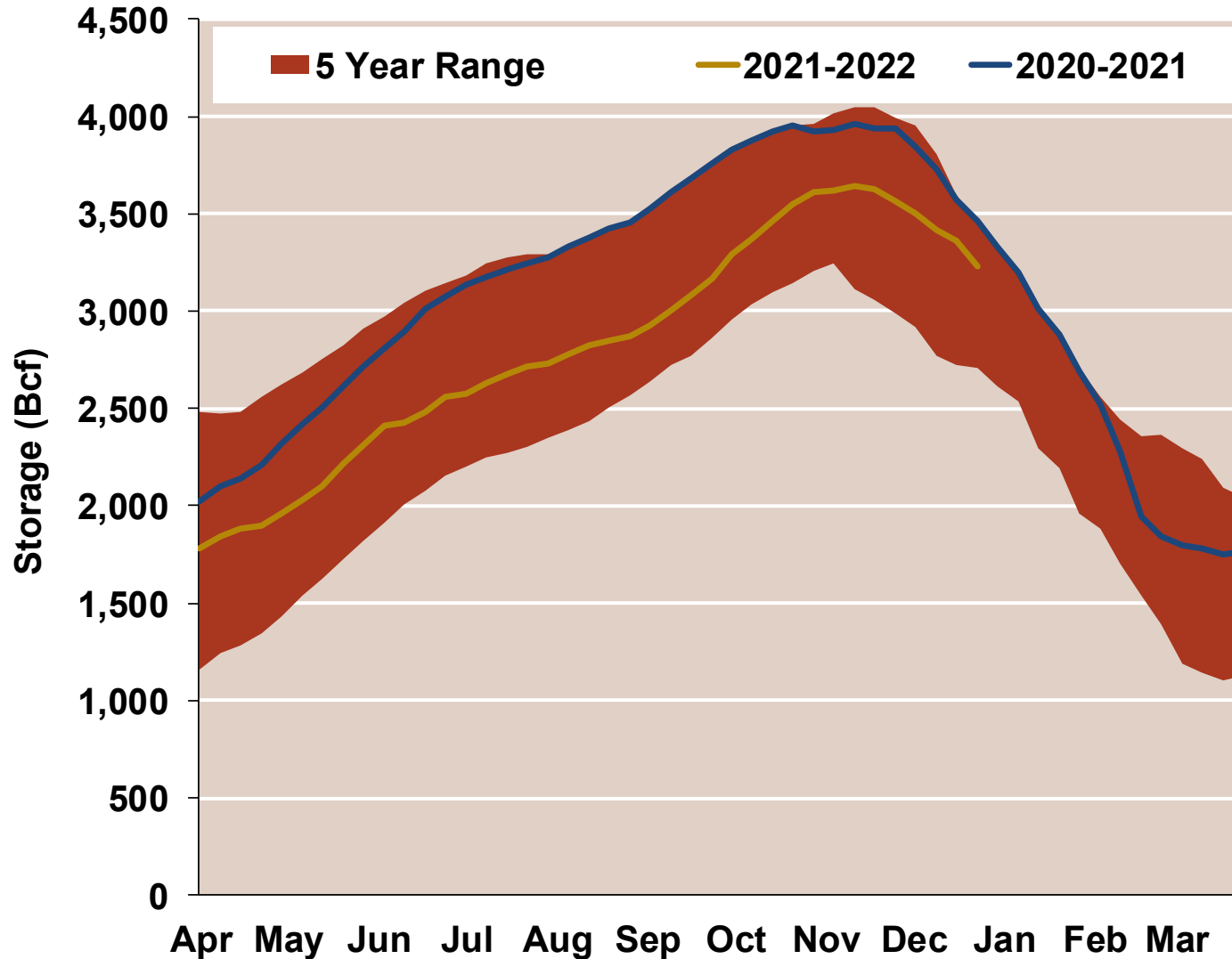
Federal Energy Regulatory Commission **Market Assessments**



National Natural Gas Market Overview: Natural Gas Storage Inventory

EIA Storage Inventories

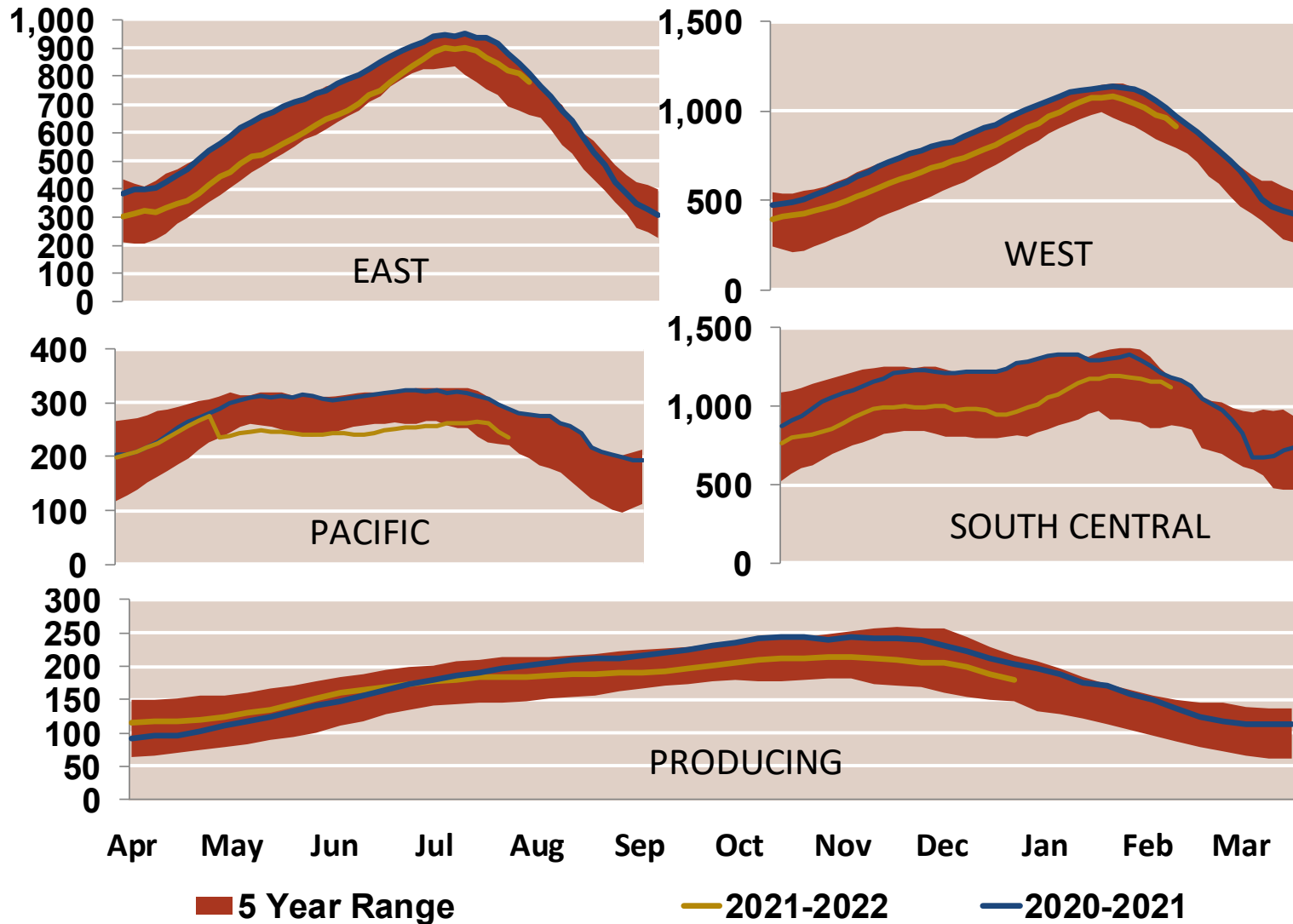
Federal Energy Regulatory Commission **Market Assessments**



National Natural Gas Market Overview: Regional Natural Gas Storage Inventory

EIA Storage Inventories

Federal Energy Regulatory Commission Market Assessments



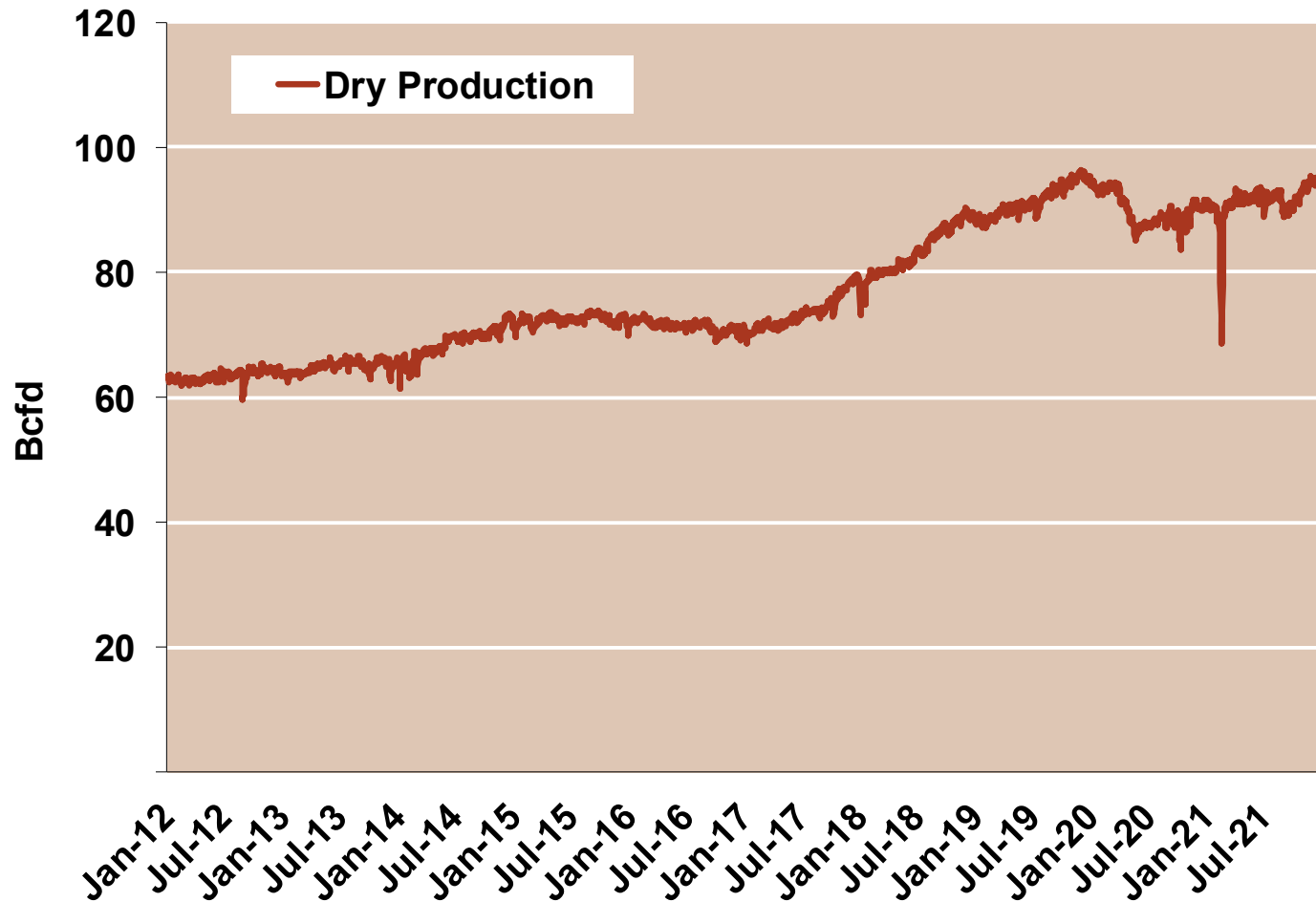
Source: Derived from EIA Data

Updated: Jan-2022

National Natural Gas Market Overview: Monthly U.S. Dry Gas Production

Monthly U.S. Dry Gas Production – Lower 48 States

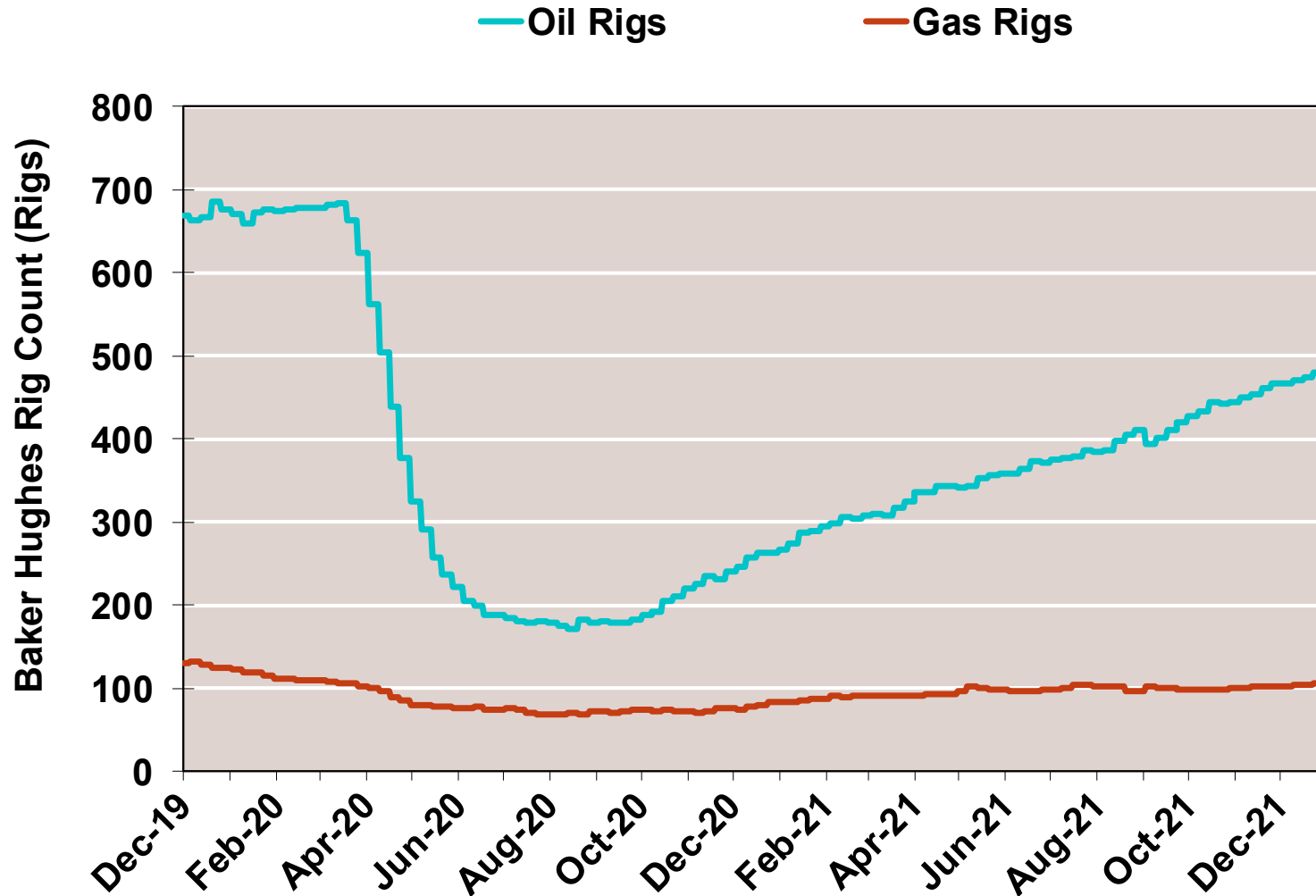
Federal Energy Regulatory Commission Market Assessments



National Natural Gas Market Overview: Rig Count by Type

NG Rigs by Fuel Type

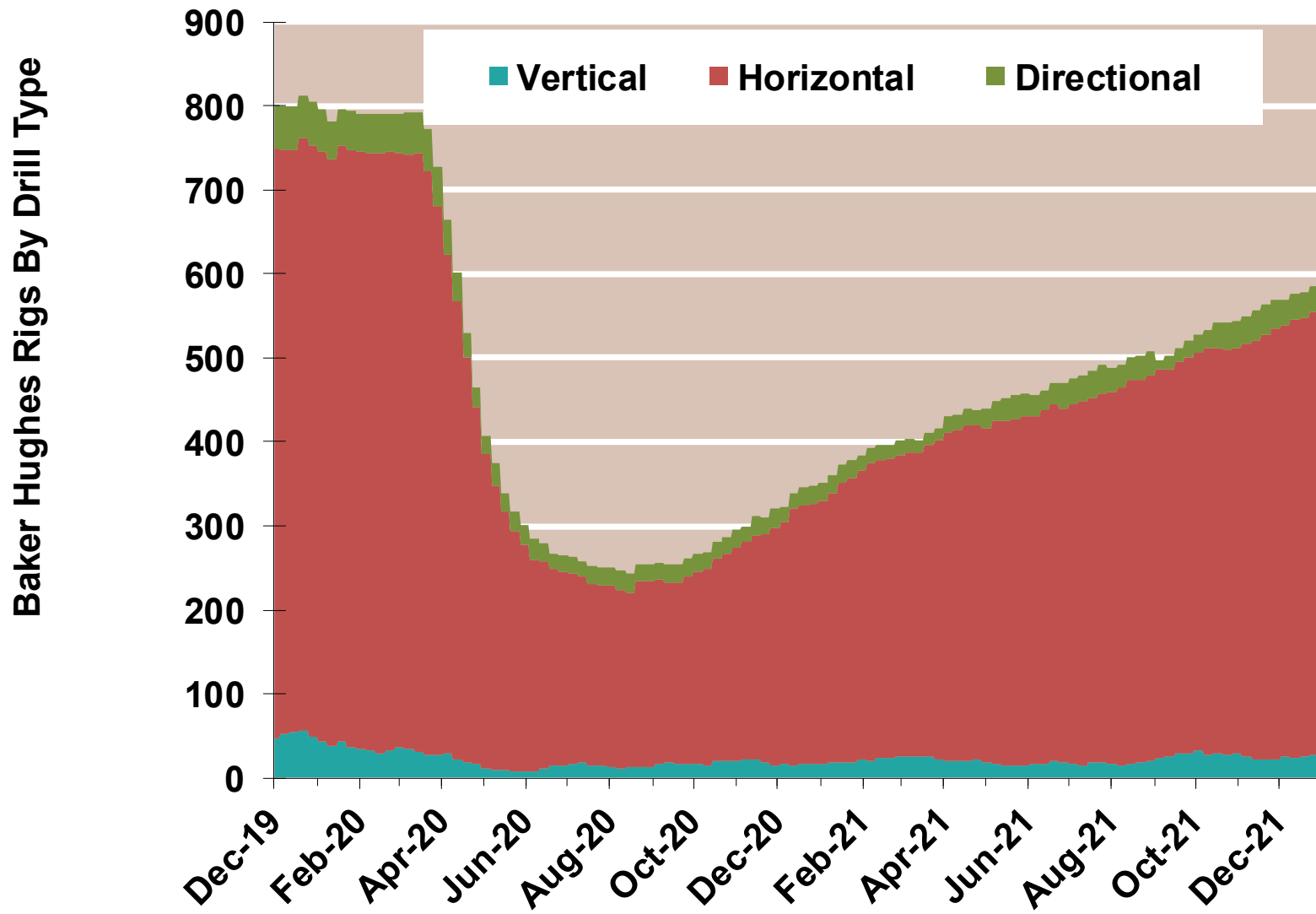
Federal Energy Regulatory Commission Market Assessments



National Natural Gas Market Overview: Rig Count by Direction

NG Rig by Direction

Federal Energy Regulatory Commission **Market Assessments**

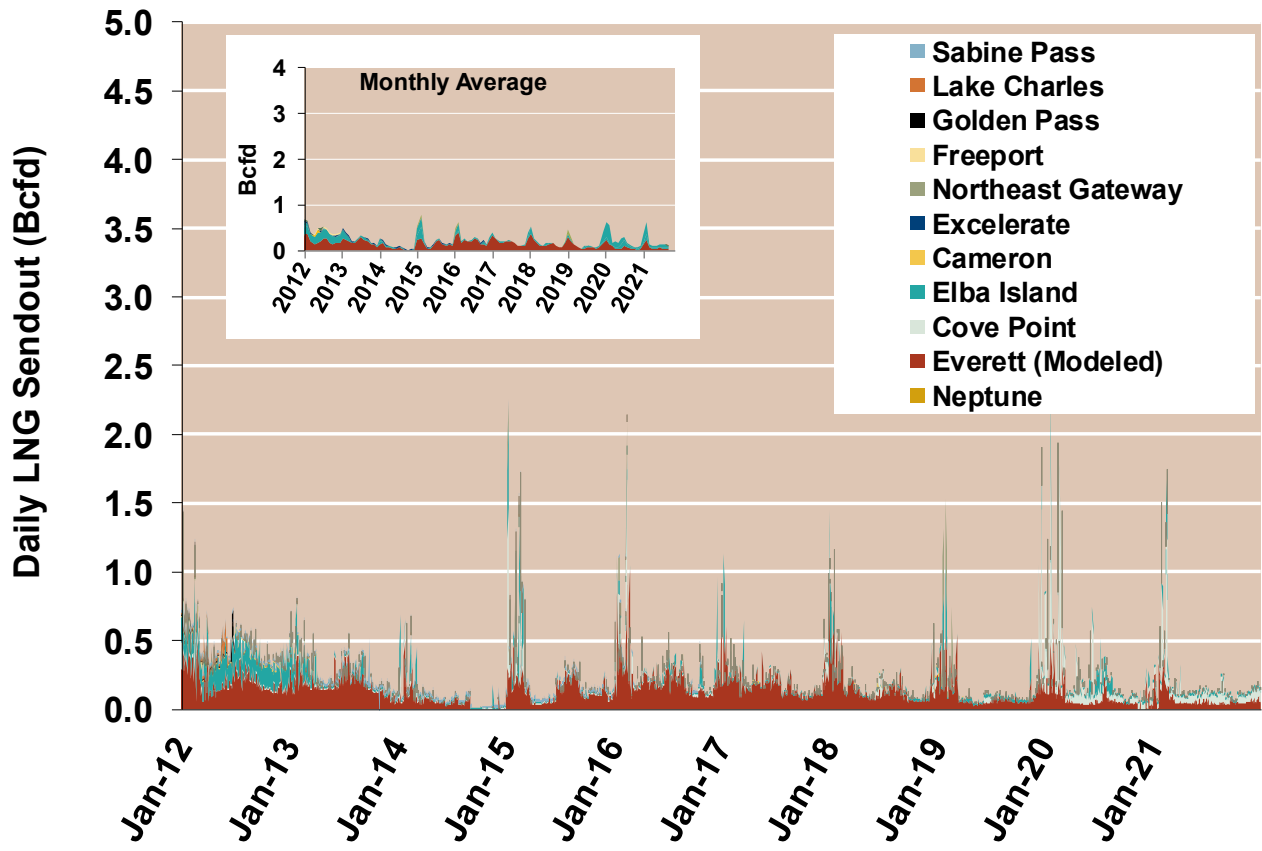


Source: Derived from Baker Hughes data

Updated: Jan-2022

Daily Gas Sendout from Existing U.S. LNG Facilities

Federal Energy Regulatory Commission **Market Assessments**



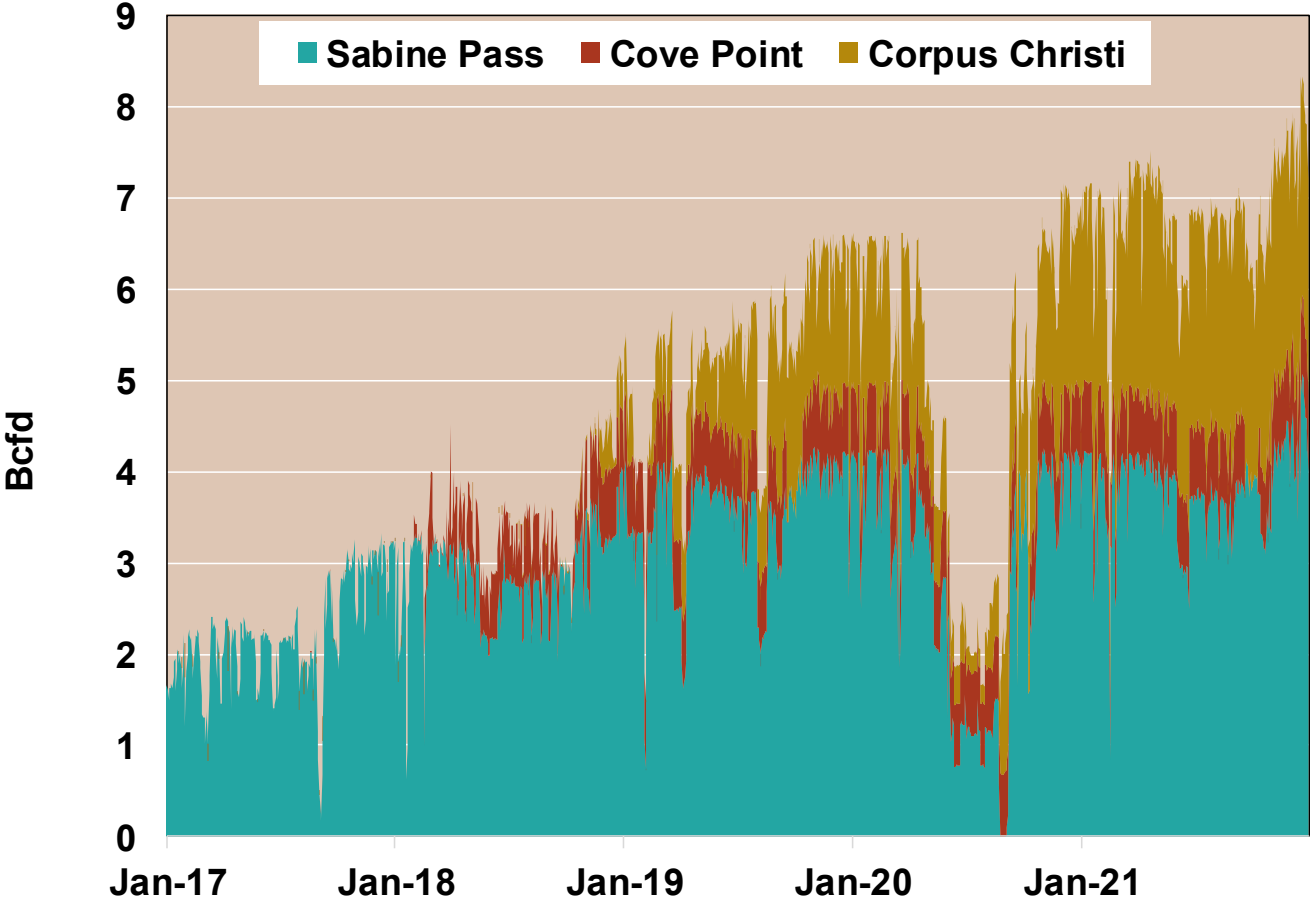
Notes: Everett data includes flows onto the AGT and TGP interstate lines, plus estimates of flows to the Mystic 7 power plant, Keyspan Boston Gas, and LNG trucked out of the terminal. Excludes flows to the Freeport LNG which flows via intrastate pipelines.

Source: Derived from S&P Global Bentek Energy data

Updated: Jan-2022

U.S. Exports of LNG

Federal Energy Regulatory Commission **Market Assessments**



Source: Derived from S&P Global Bentek Energy data.