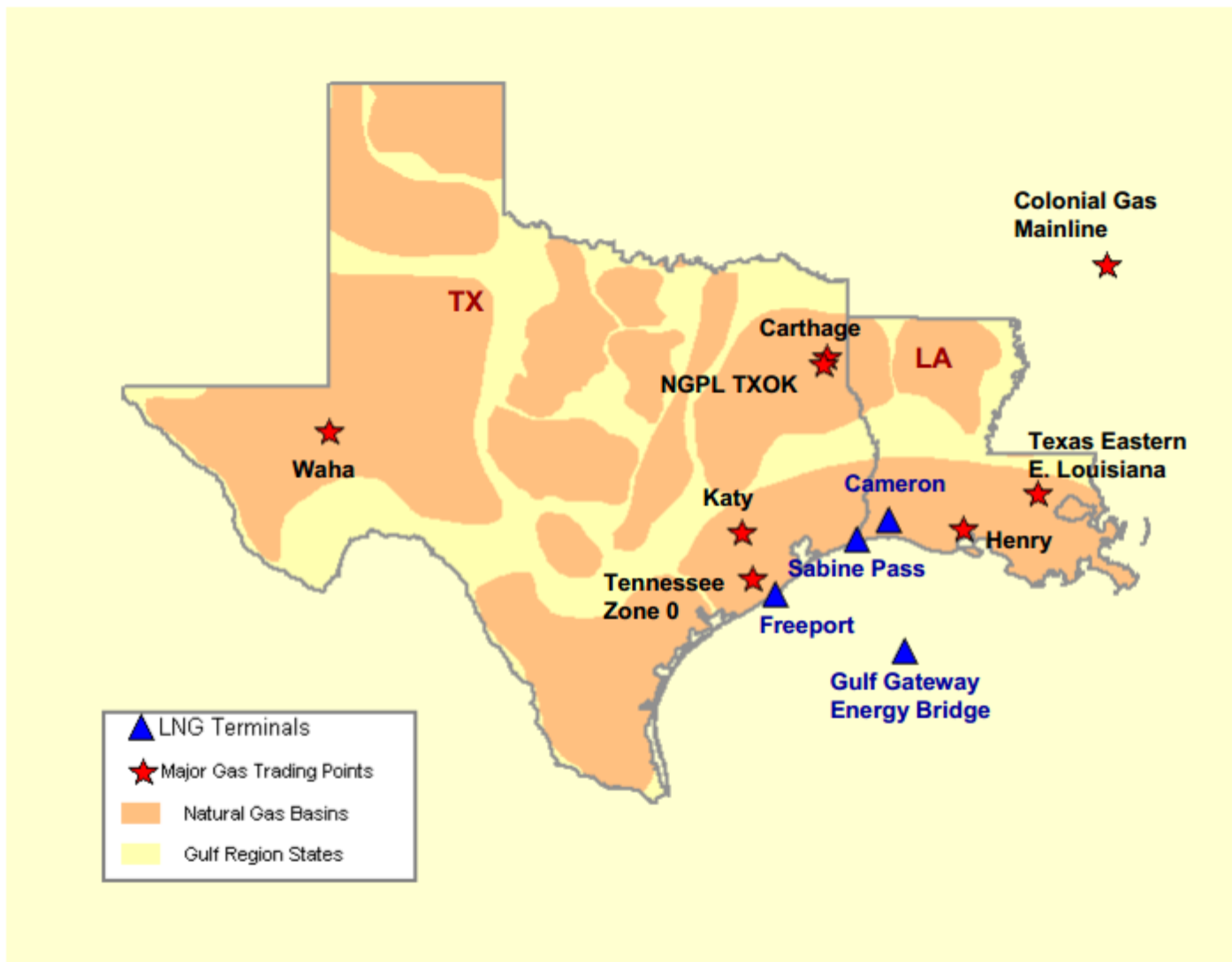


# Gulf Natural Gas Region

Federal Energy Regulatory Commission Market Assessments



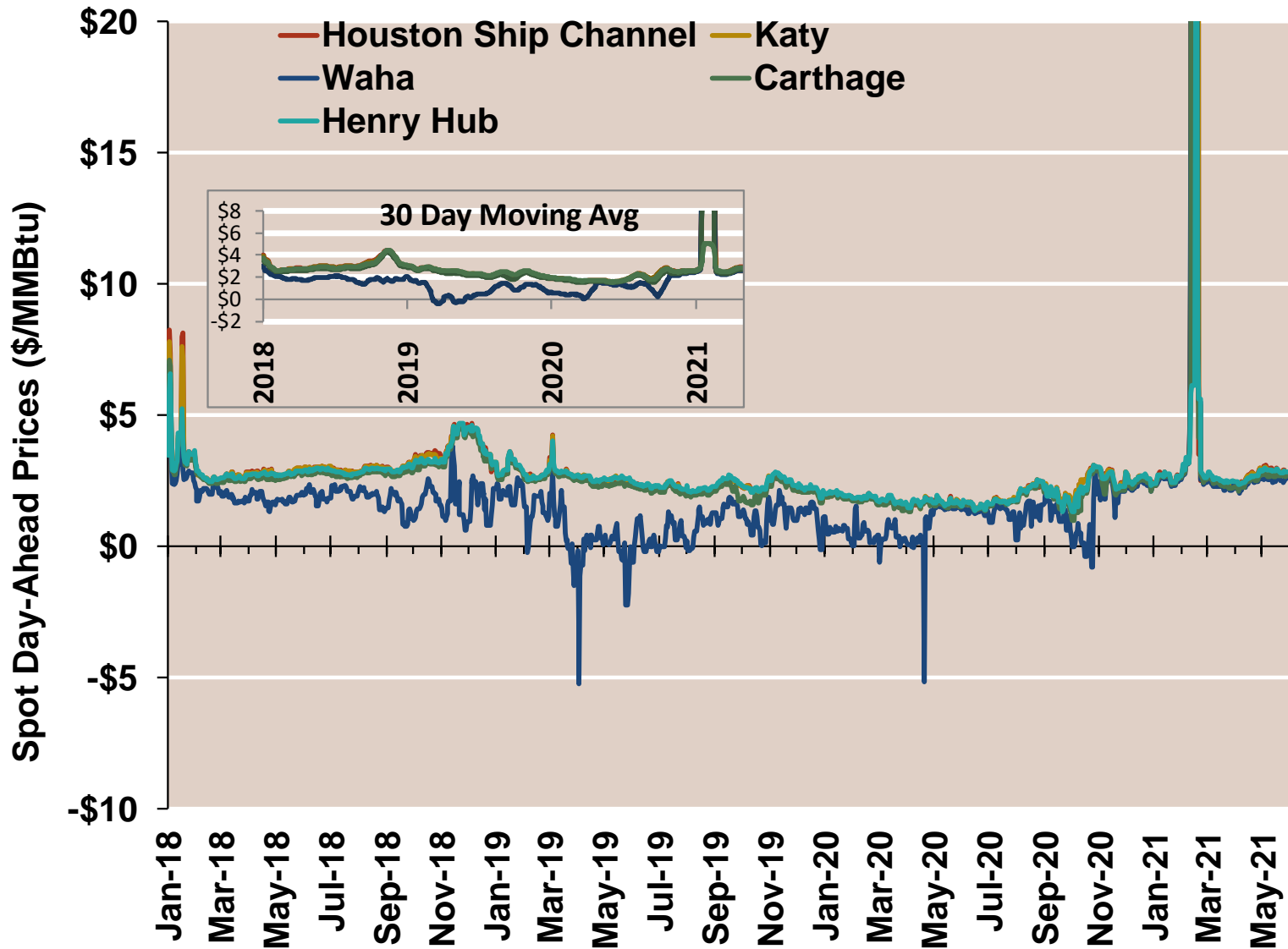
**Gulf Day-Ahead Prices  
Averaged Annually/Seasonally**

Federal Energy Regulatory Commission **Market Assessments**

	Average Day Ahead Prices (\$/MMBtu)	Houston Ship Chnl	Katy Texas	Waha Hub	Carthage TX	Henry Hub
<b>2018</b>	Annual	3.20	3.17	1.94	2.98	<b>3.12</b>
	Summer	3.01	2.99	1.83	2.77	<b>2.91</b>
	Winter 2018/2019	3.32	3.29	1.51	3.18	<b>3.33</b>
<b>2019</b>	Annual	2.45	2.46	0.82	2.31	<b>2.51</b>
	Summer	2.33	2.35	0.47	2.16	<b>2.39</b>
	Winter 2019/2020	1.99	1.99	0.79	1.93	<b>2.07</b>
<b>2020</b>	Annual	1.99	1.99	1.11	1.86	<b>1.99</b>
	Summer	1.90	1.91	1.06	1.77	<b>1.88</b>
	Winter 2020/2021	12.73	10.14	10.15	4.18	<b>3.08</b>
<b>2021 YTD</b>	Annual	12.81	10.22	10.26	4.27	<b>3.15</b>
	Summer	2.77	2.75	2.49	2.59	<b>2.74</b>
	Winter 2021/2022					

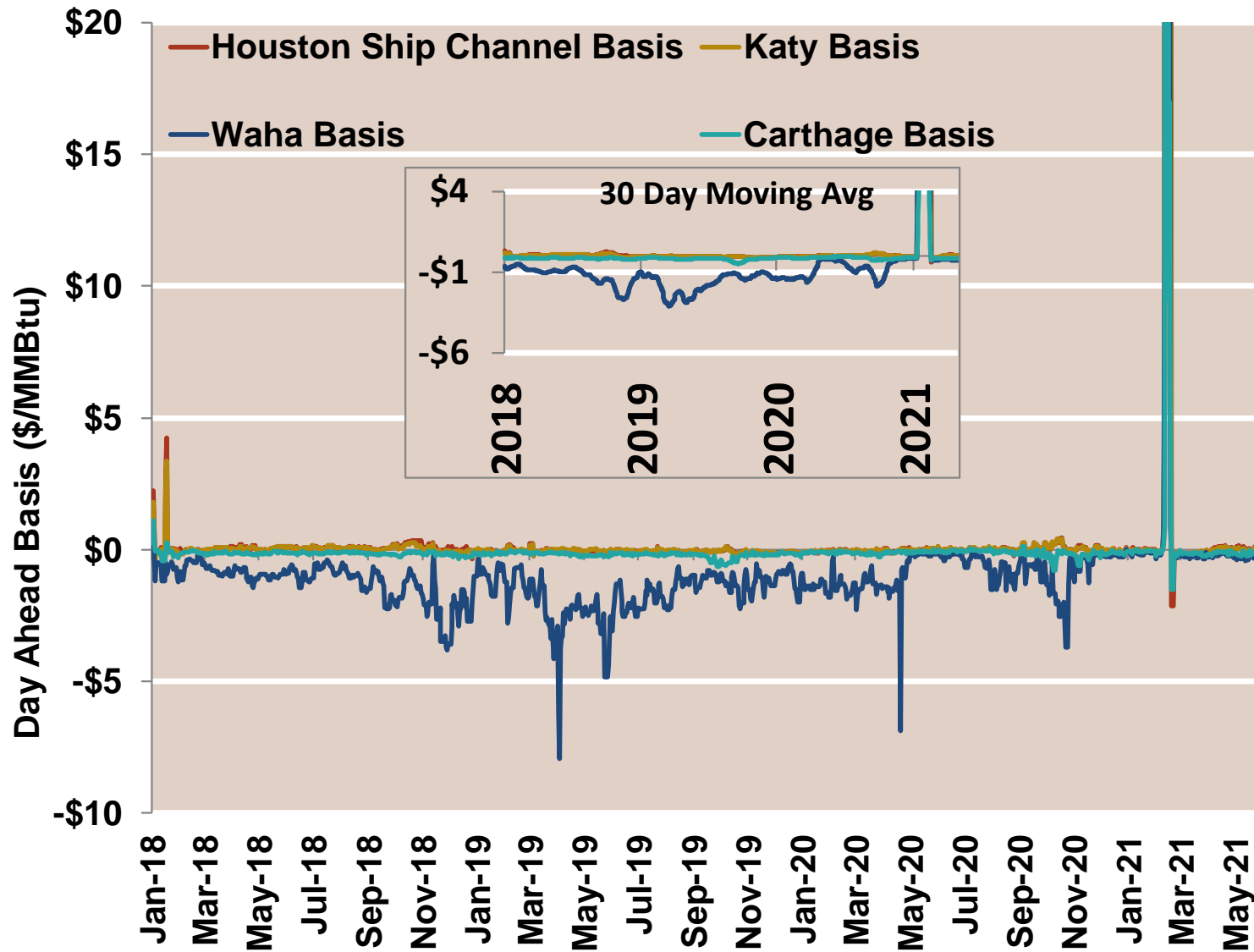
# Gulf Day-Ahead Prices

Federal Energy Regulatory Commission Market Assessments



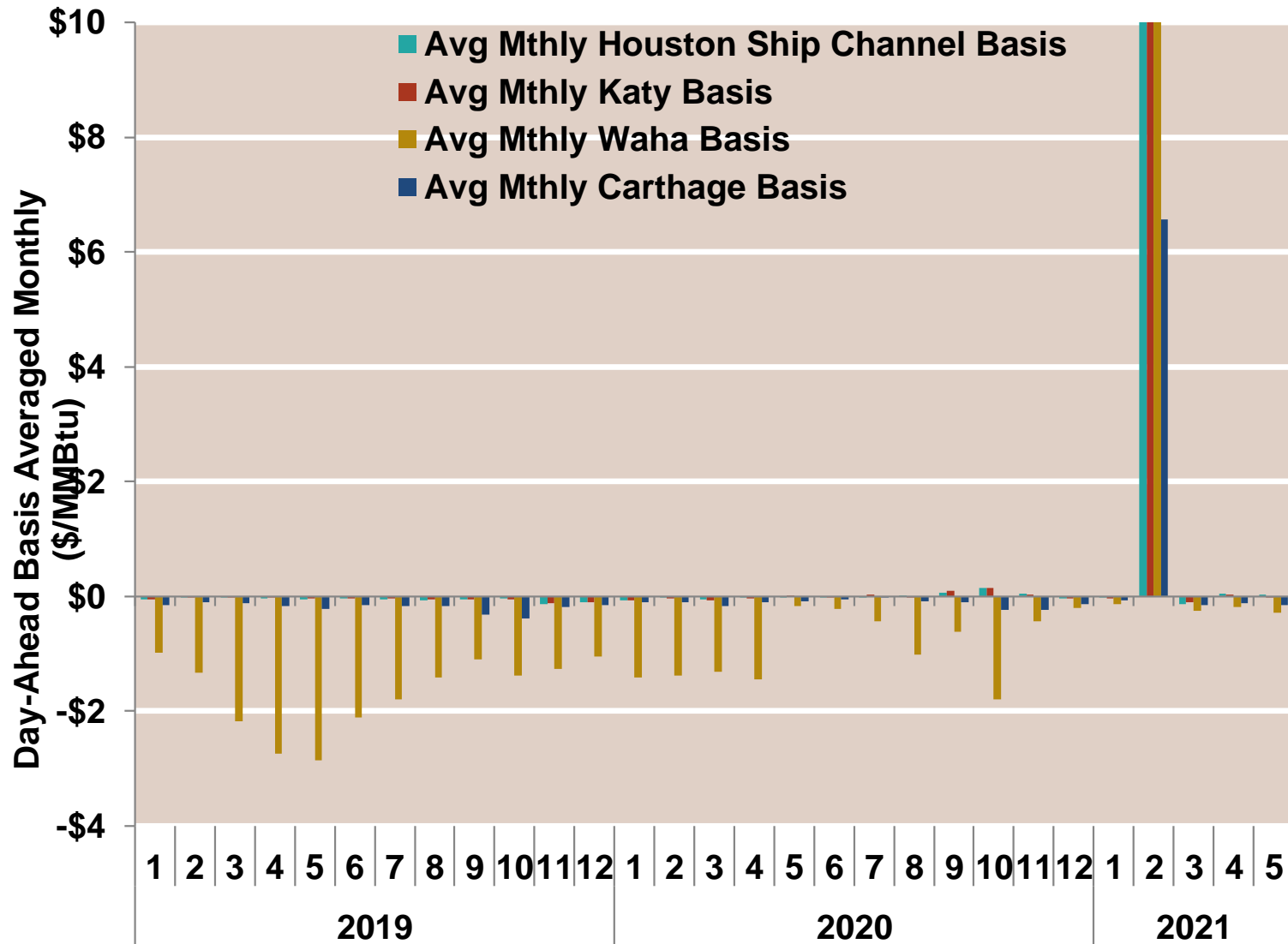
# Gulf Day-Ahead Basis

Federal Energy Regulatory Commission Market Assessments



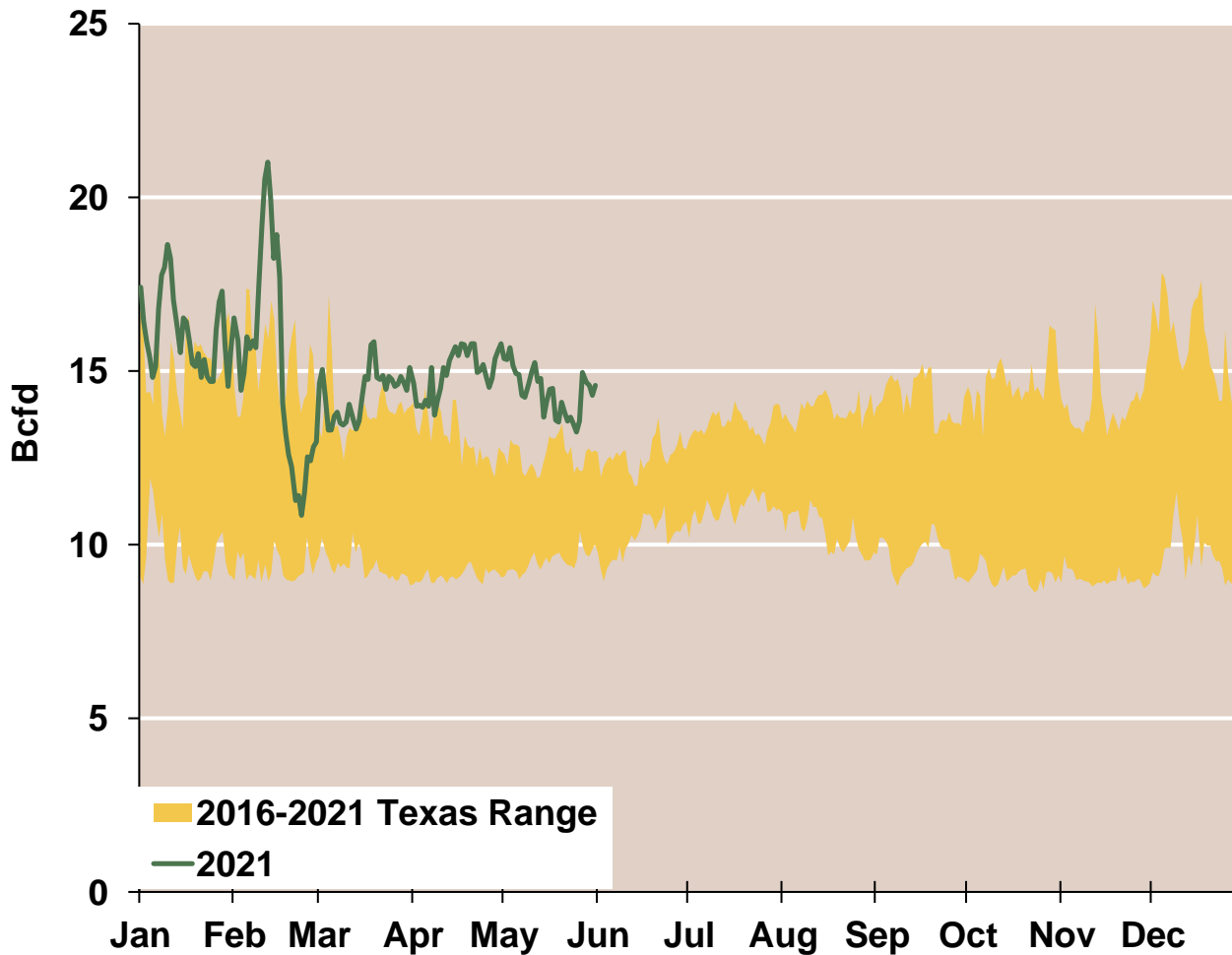
# Gulf Day-Ahead Basis To Henry Hub Averaged Monthly

Federal Energy Regulatory Commission Market Assessments



# Daily Texas Natural Gas Demand All Sectors

Federal Energy Regulatory Commission **Market Assessments**



# Texas Natural Gas Consumption for Power Generation

Federal Energy Regulatory Commission Market Assessments

