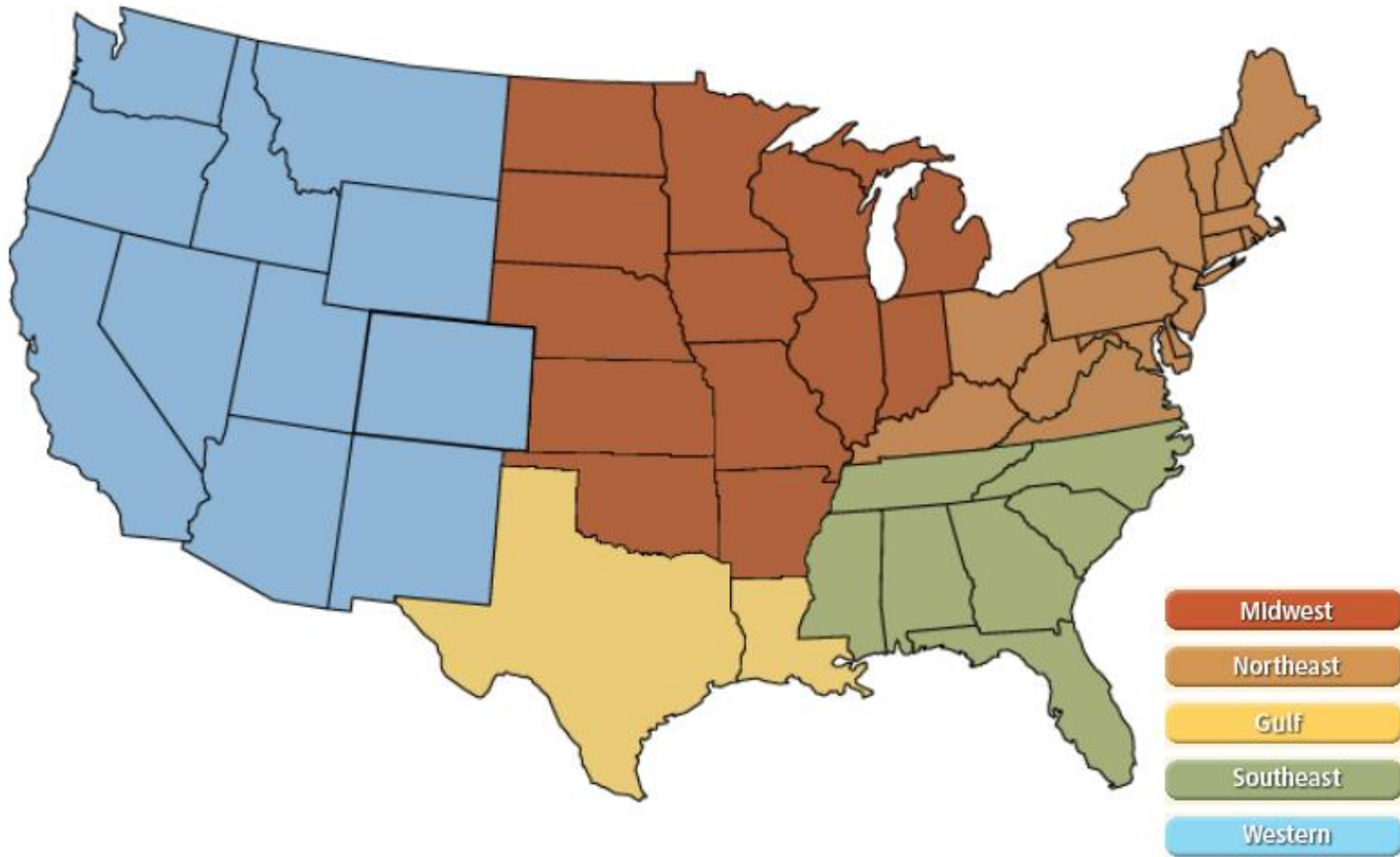


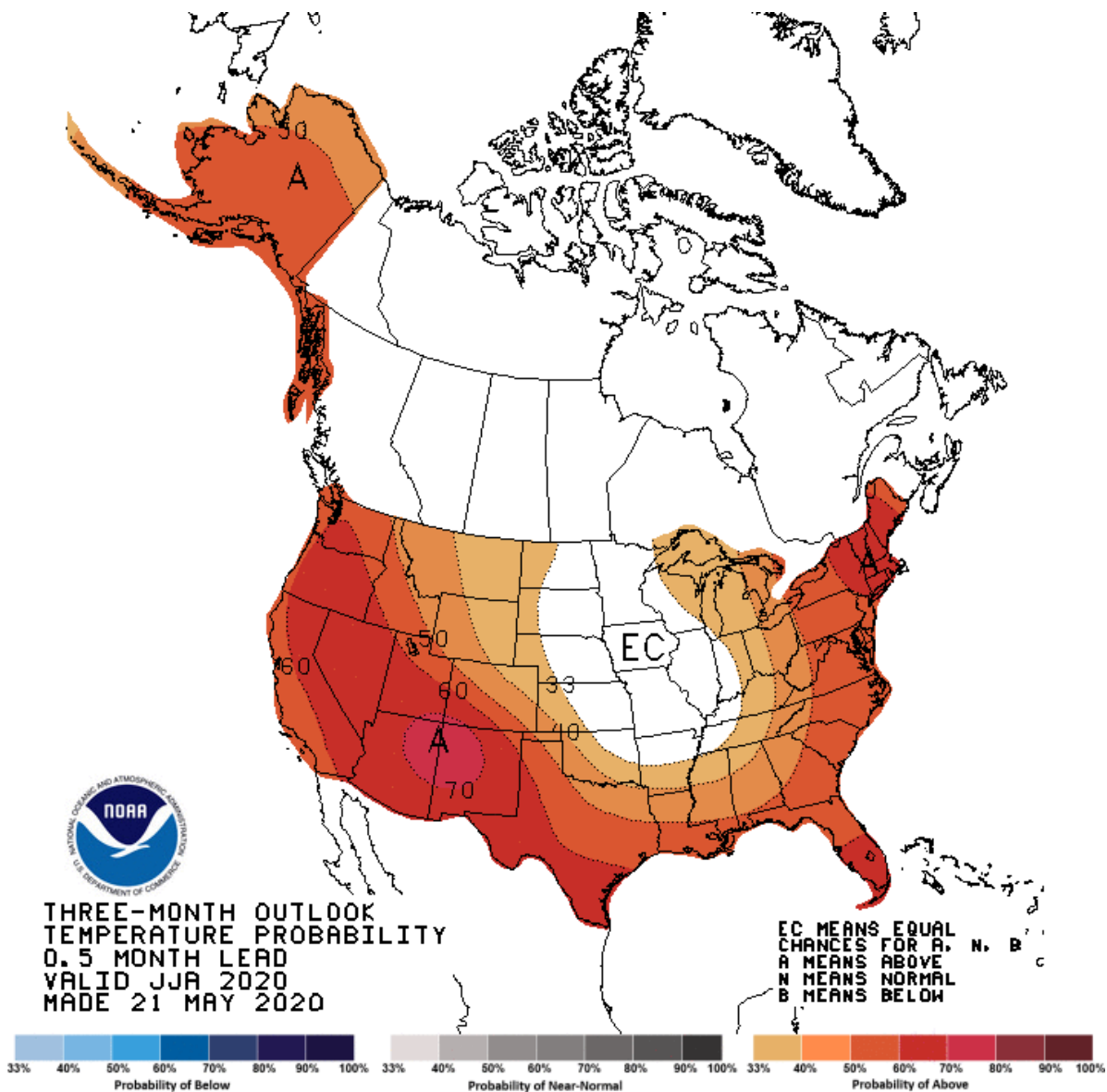
National

Federal Energy Regulatory Commission Market Assessments



NOAA 3 Month Outlook

Federal Energy Regulatory Commission **Market Assessments**

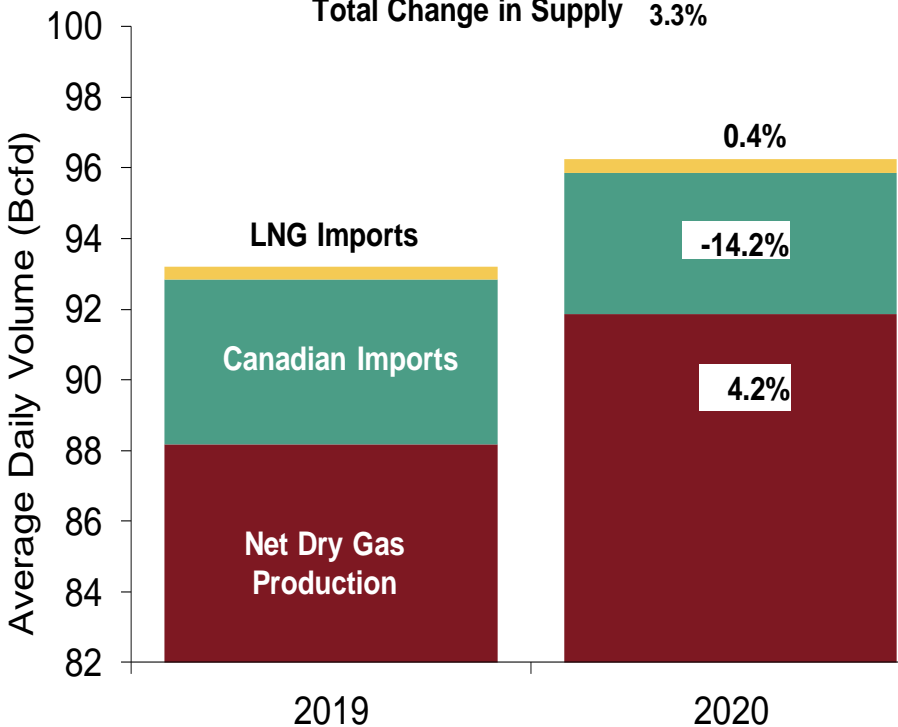


U.S. NG Supply and Demand Apr-19 YTD vs. Apr-20 YTD

Federal Energy Regulatory Commission **Market Assessments**

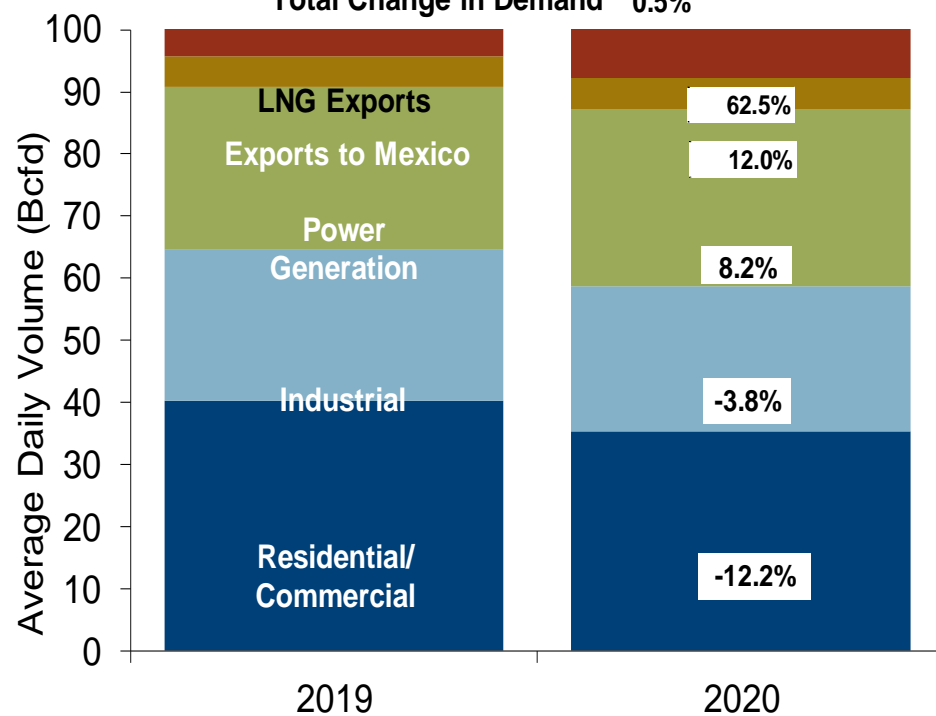
US Natural Gas Supply

Total Change in Supply 3.3%



US Natural Gas Demand

Total Change in Demand 0.5%

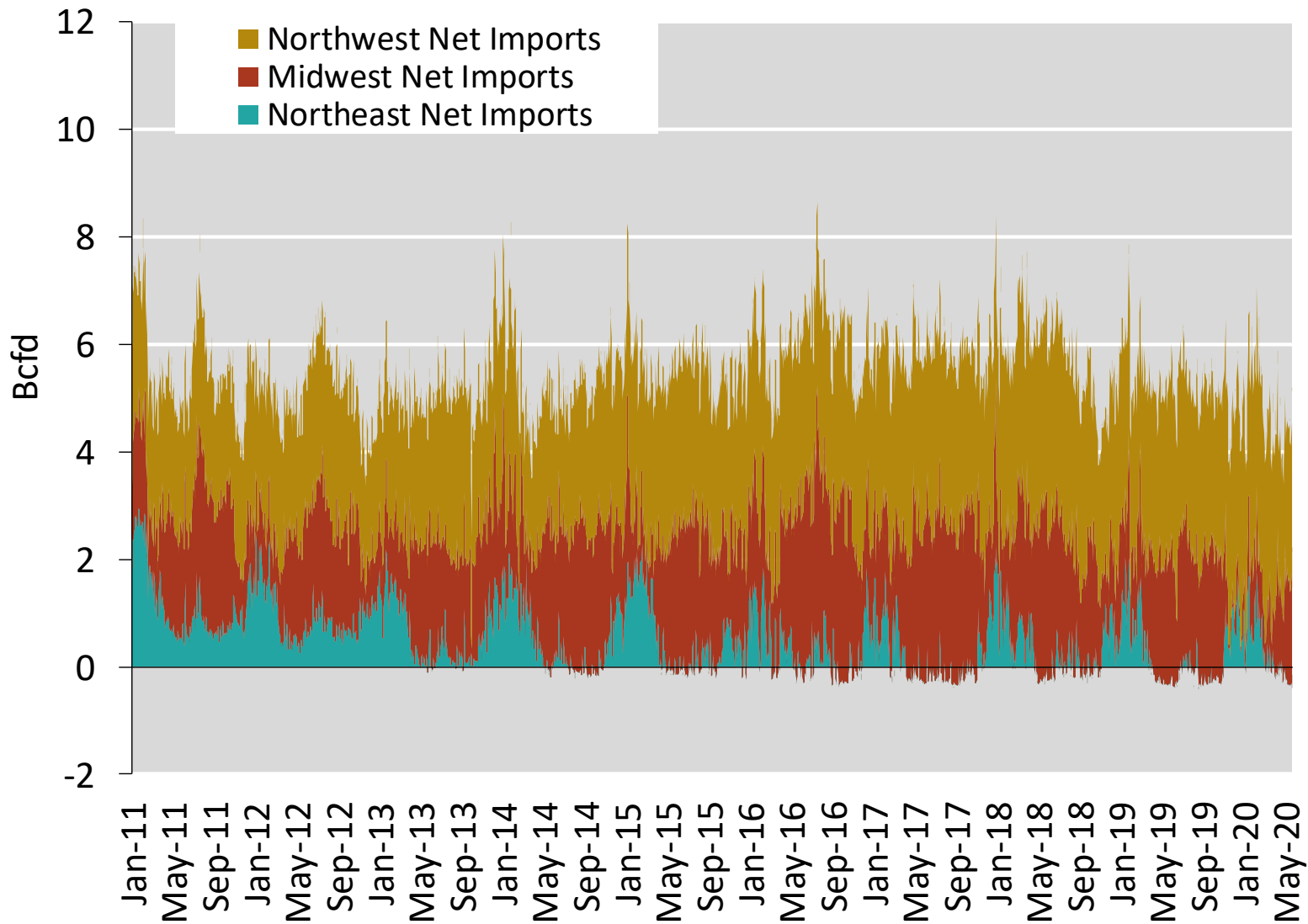


Note: Balance includes all amounts not attributable to other categories.

Source: Derived from *Bentek Energy* data

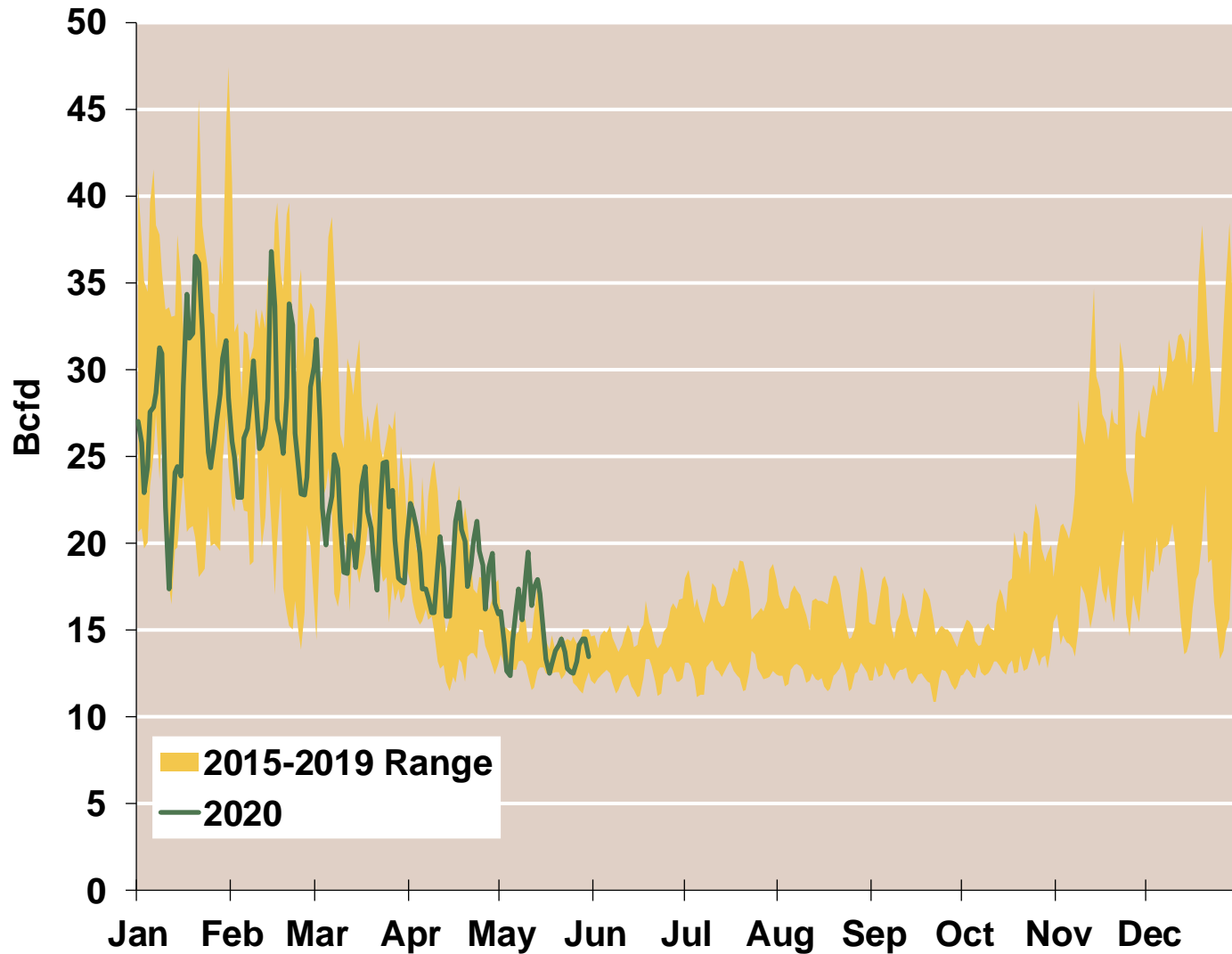
Regional Canadian Imports

Federal Energy Regulatory Commission **Market Assessments**



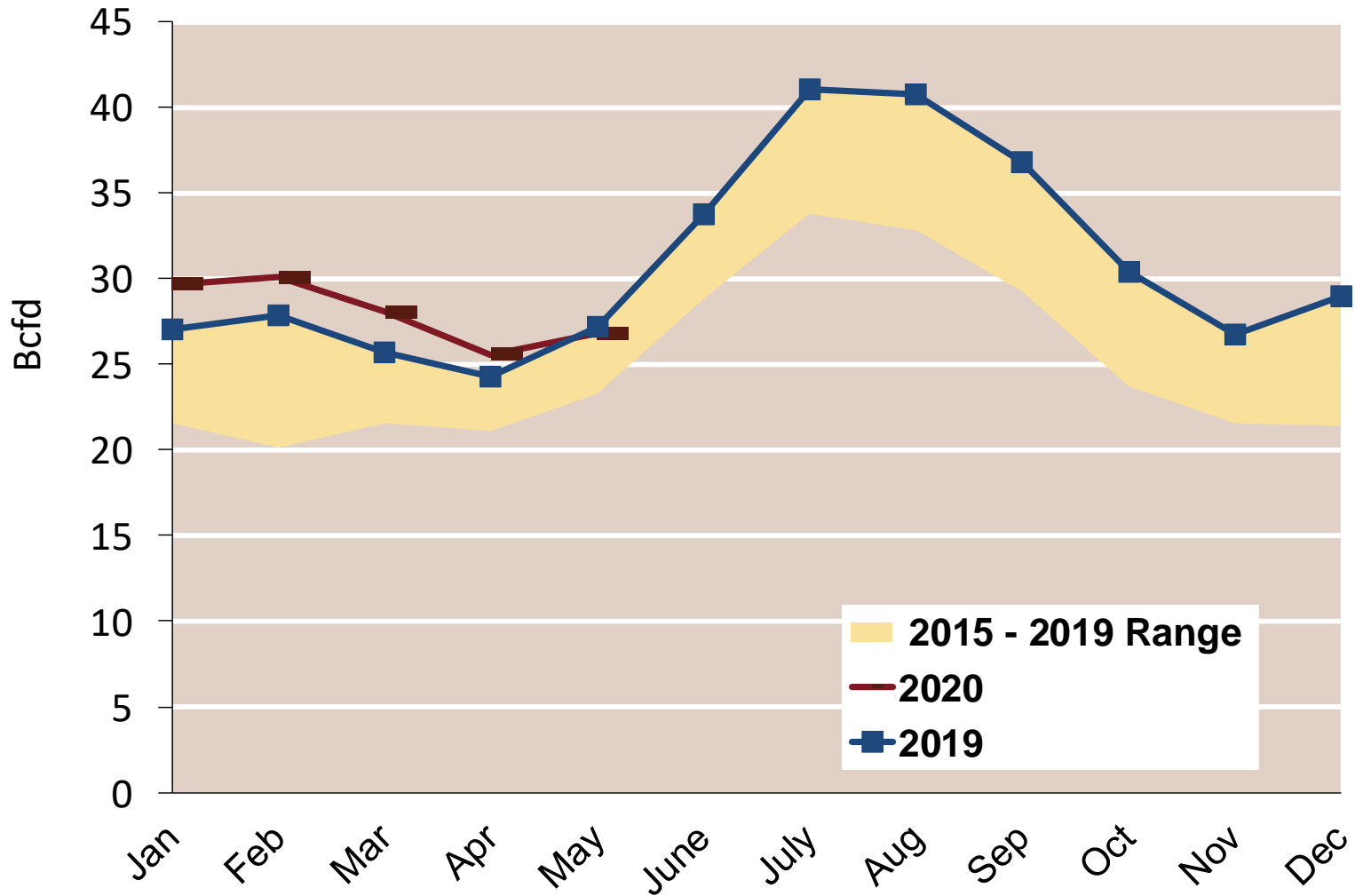
Total U.S. Natural Gas Demand All Sectors

Federal Energy Regulatory Commission **Market Assessments**



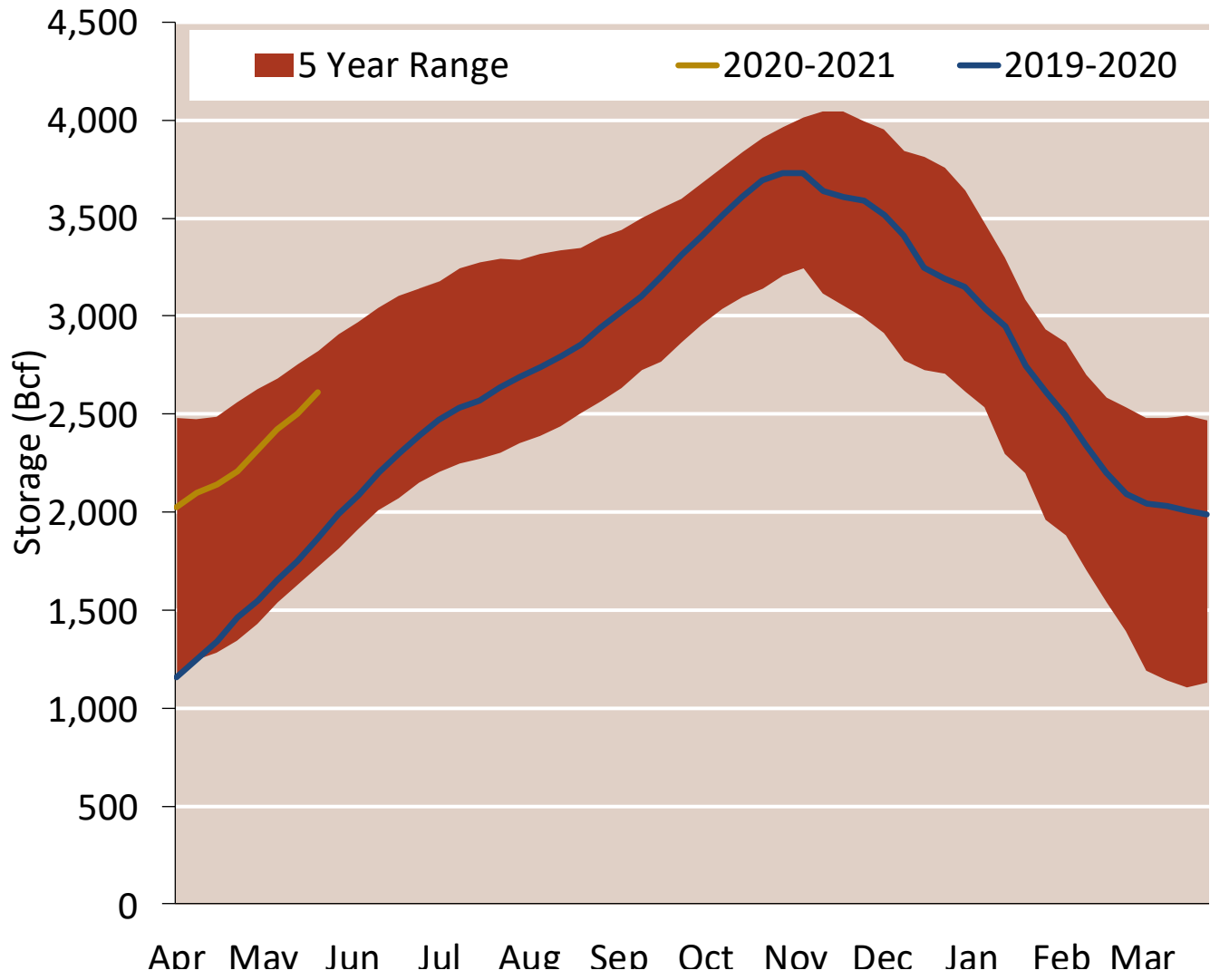
U.S. Natural Gas Consumption for Power Generation

Federal Energy Regulatory Commission **Market Assessments**



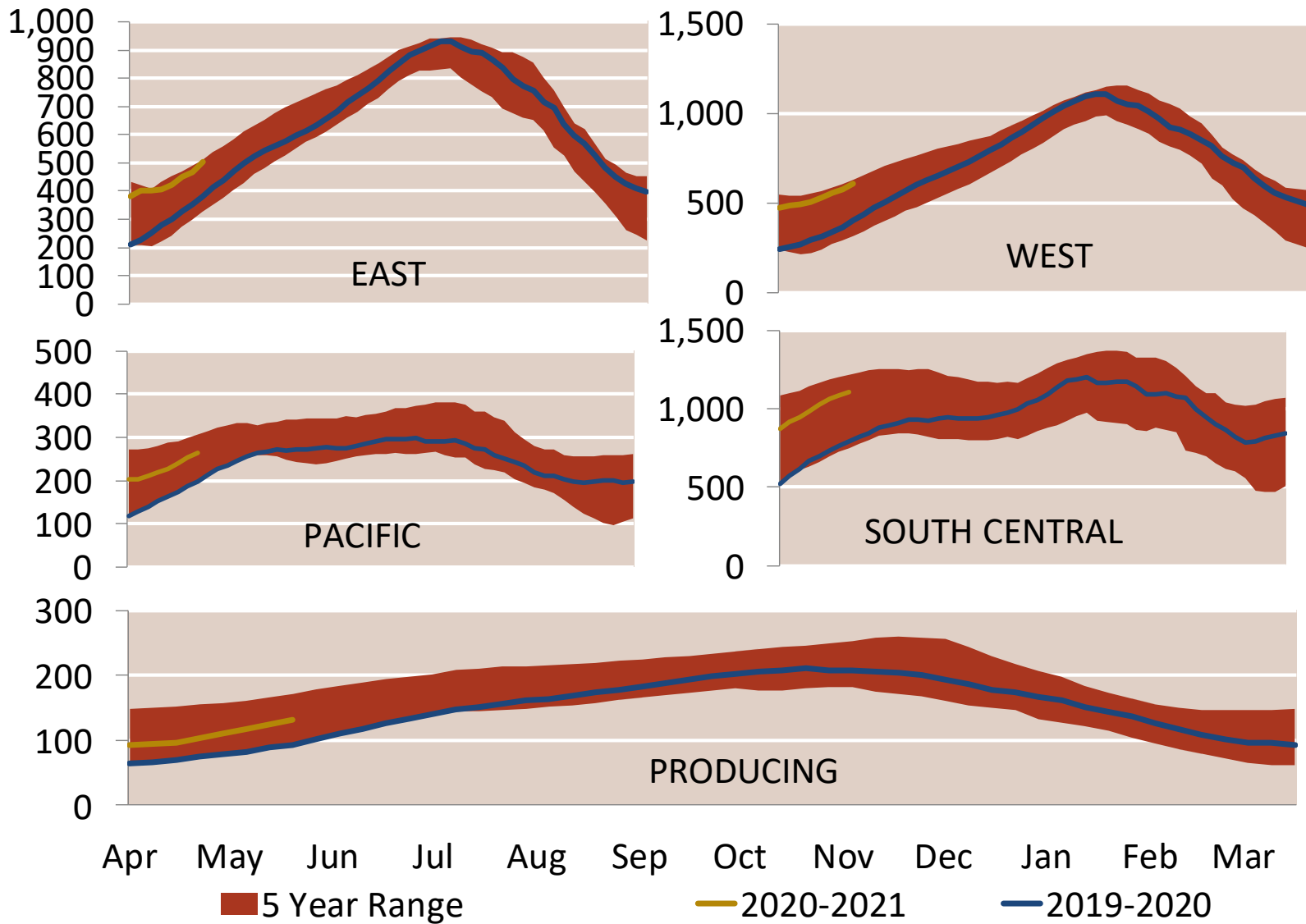
EIA Storage Inventories

Federal Energy Regulatory Commission **Market Assessments**

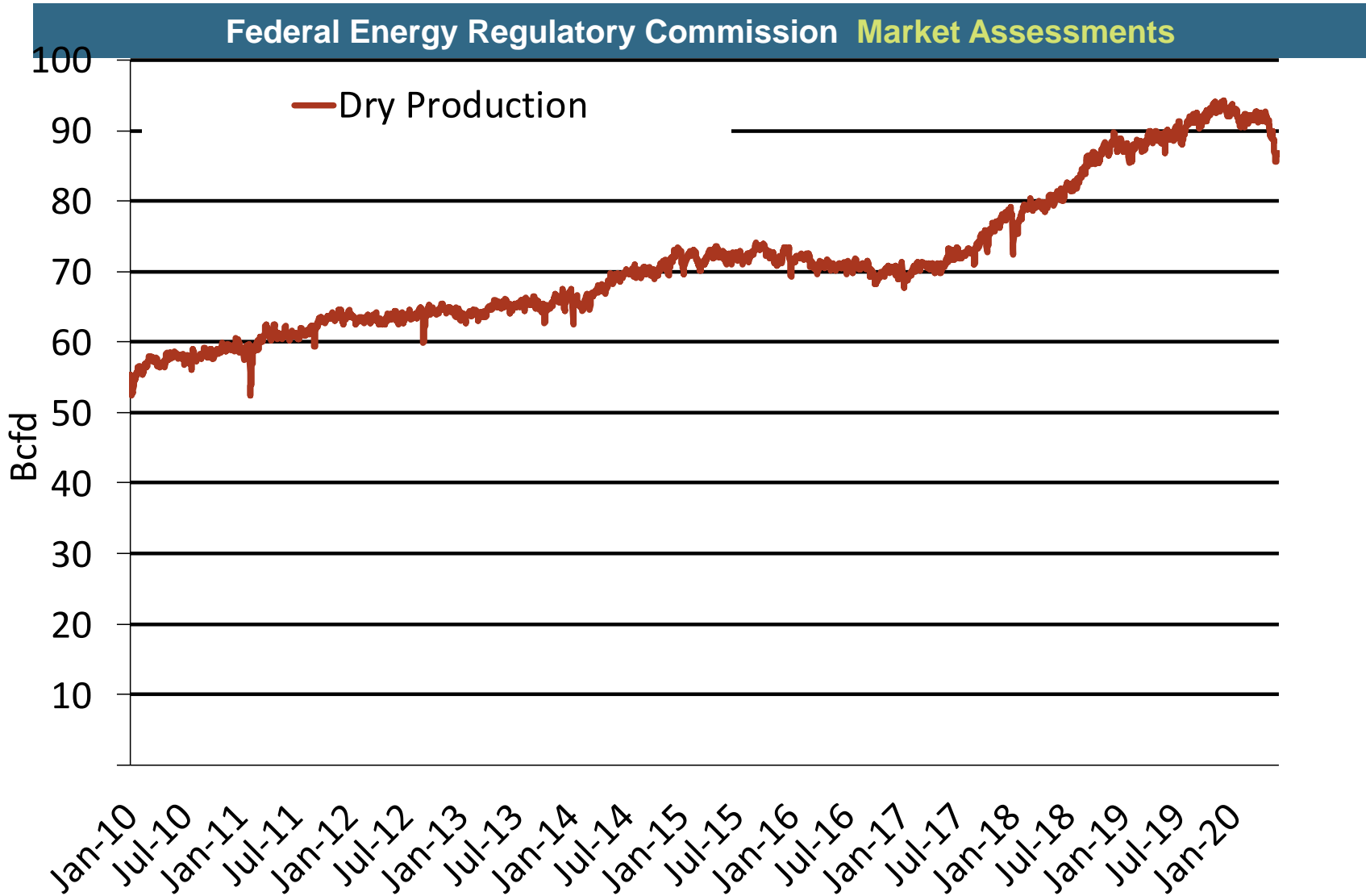


EIA Storage Inventories

Federal Energy Regulatory Commission **Market Assessments**



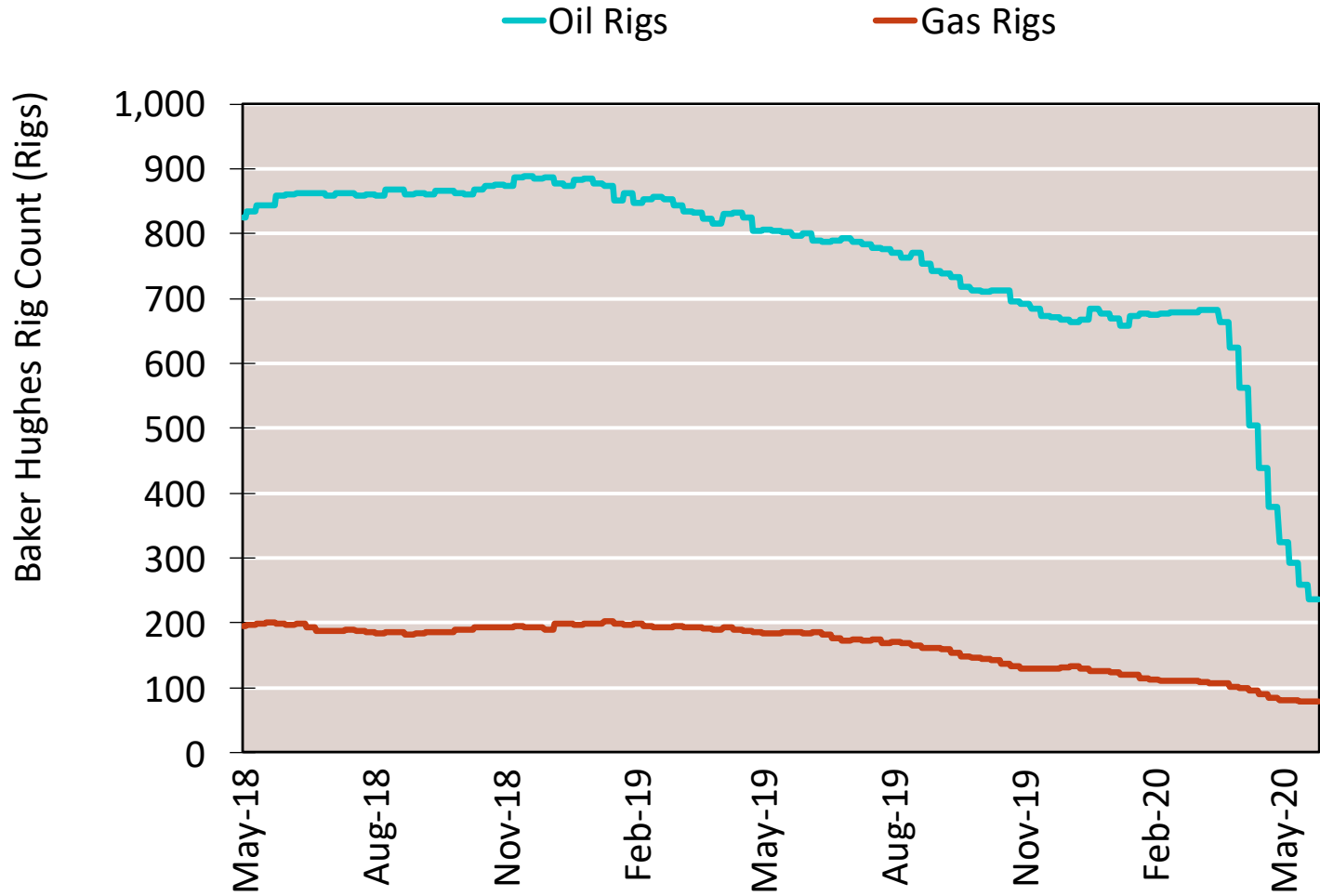
Monthly U.S. Dry Gas Production – Lower 48 States



Note: Prior to July 2010, chart was derived from a combination of EIA and Bentek Energy data
Source: Derived from Bentek Energy data

NG Rigs by Fuel Type

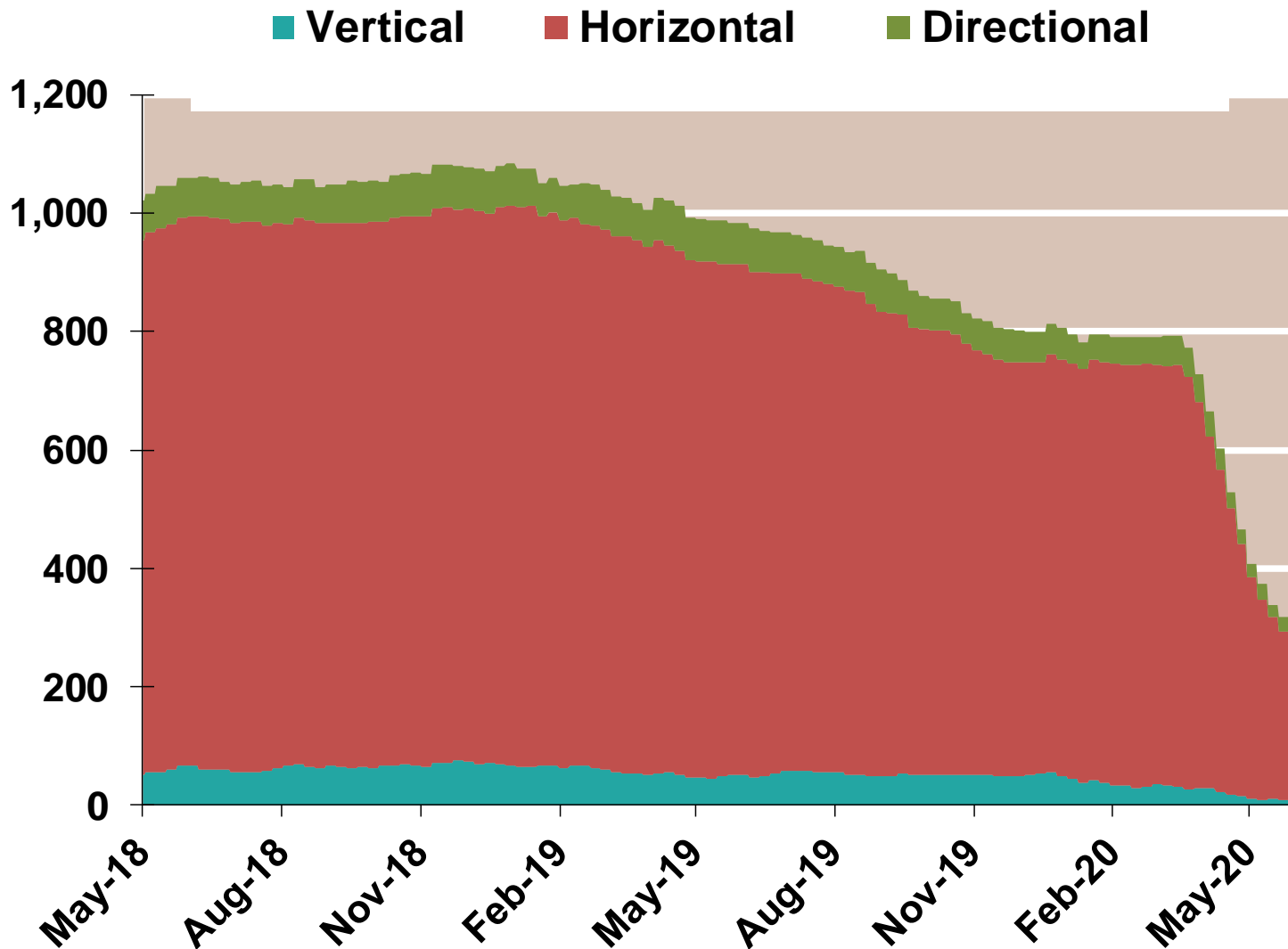
Federal Energy Regulatory Commission **Market Assessments**



NG Rig by Direction

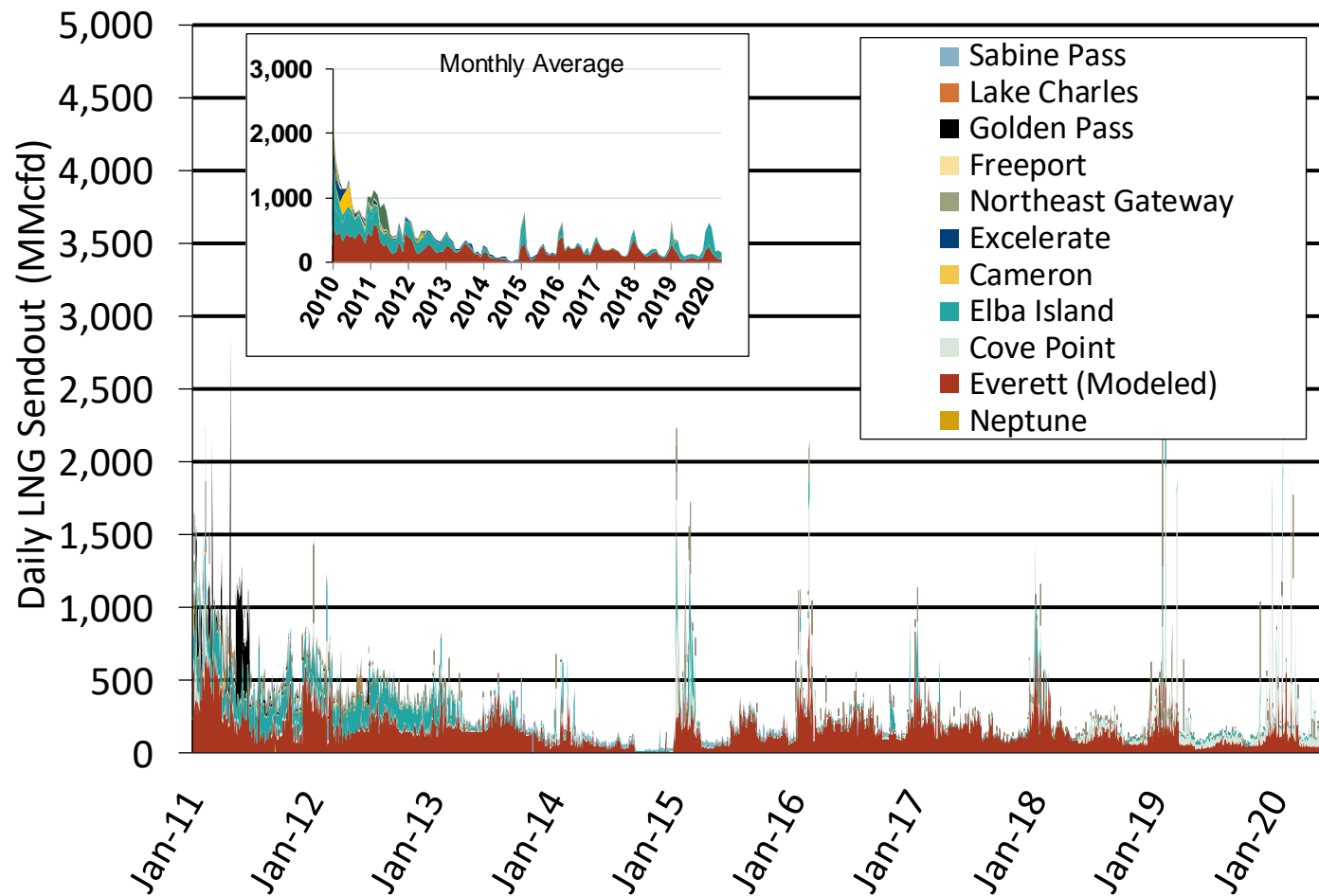
Federal Energy Regulatory Commission **Market Assessments**

Baker Hughes Rigs By Drill Type



Daily Gas Sendout from Existing U.S. LNG Facilities

Federal Energy Regulatory Commission **Market Assessments**



Notes: Everett data includes flows onto the AGT and TGP interstate lines, plus estimates of flows to the Mystic 7 power plant, Keyspan Boston Gas, and LNG trucked out of the terminal. Excludes flows to the Freeport LNG which flows via intrastate pipelines and flows to the Mystic 8 and 9 power plants.

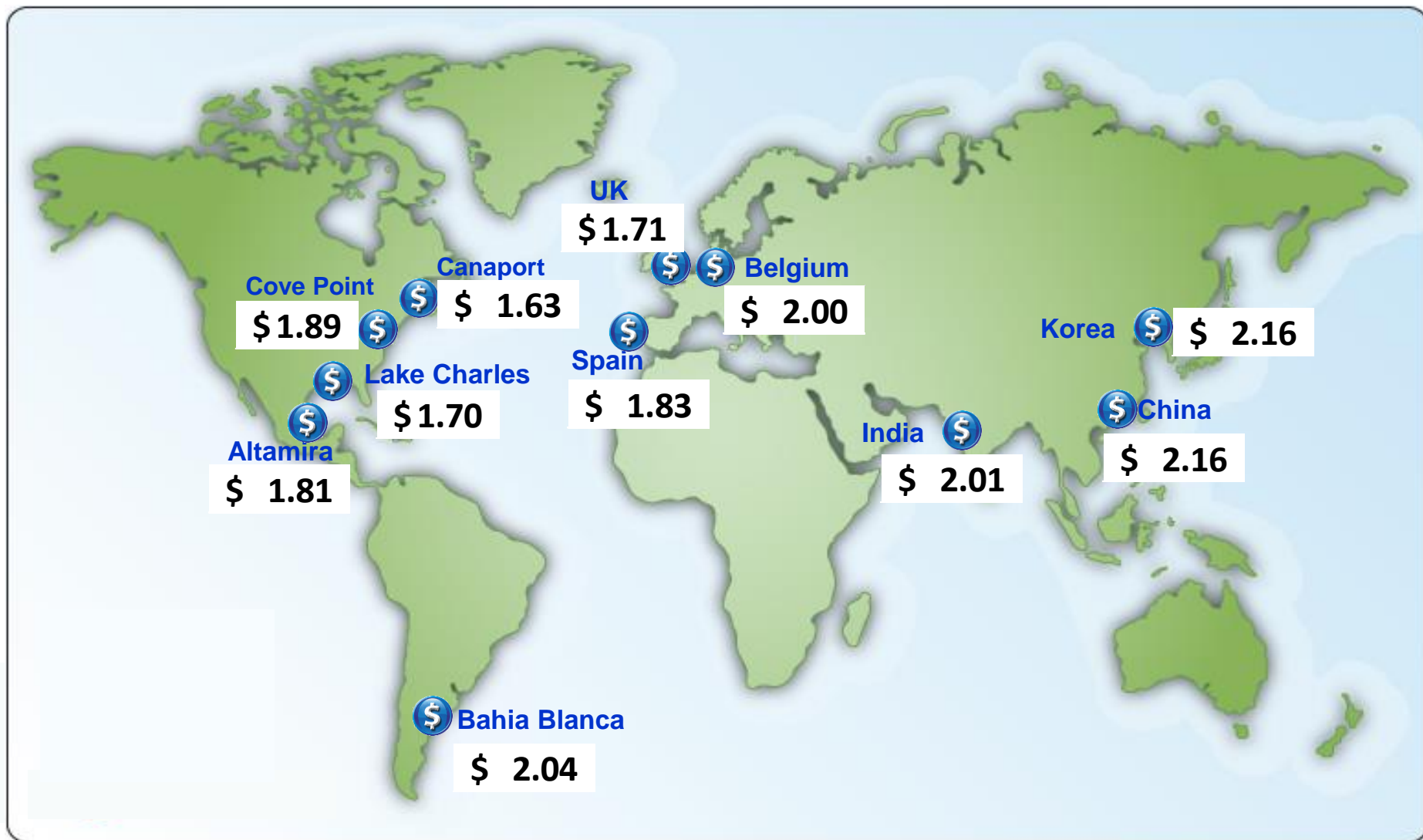
Source: Derived from *Bentek Energy* data

Updated

May-2020

World LNG Estimated Landed Prices: Apr-20

Federal Energy Regulatory Commission **Market Assessments**



Source: *Waterborne Energy, Inc.* Data in \$US/MMBtu.

Note: Includes information and Data supplied by IHS Global Inc. and its affiliates ("IHS"); Copyright (publication year) all rights reserved. Prices are the monthly average of the weekly landed prices for the listed month. Landed prices are based on a netback calculation.

Updated:

U.S. Exports of LNG

Federal Energy Regulatory Commission **Market Assessments**

