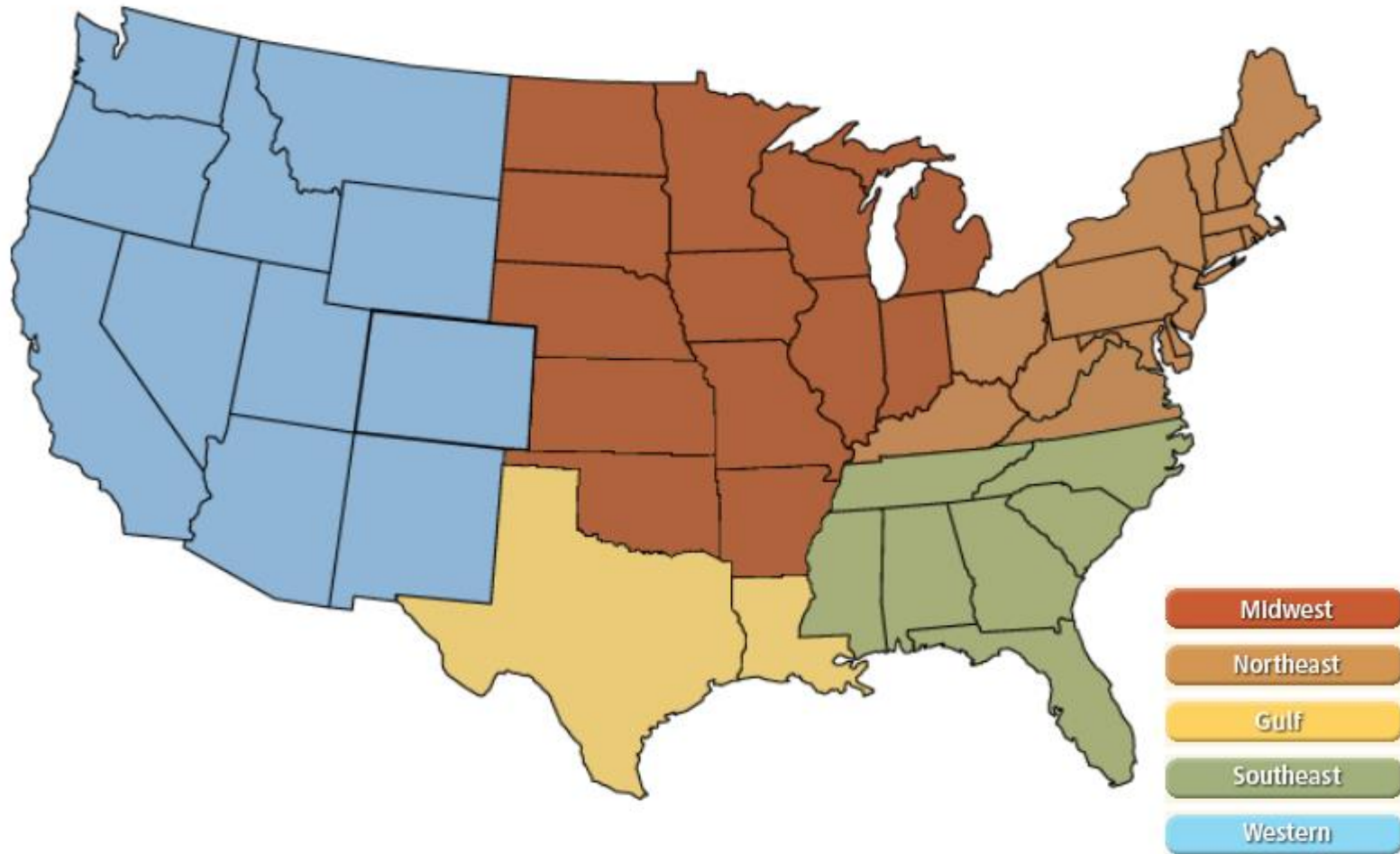


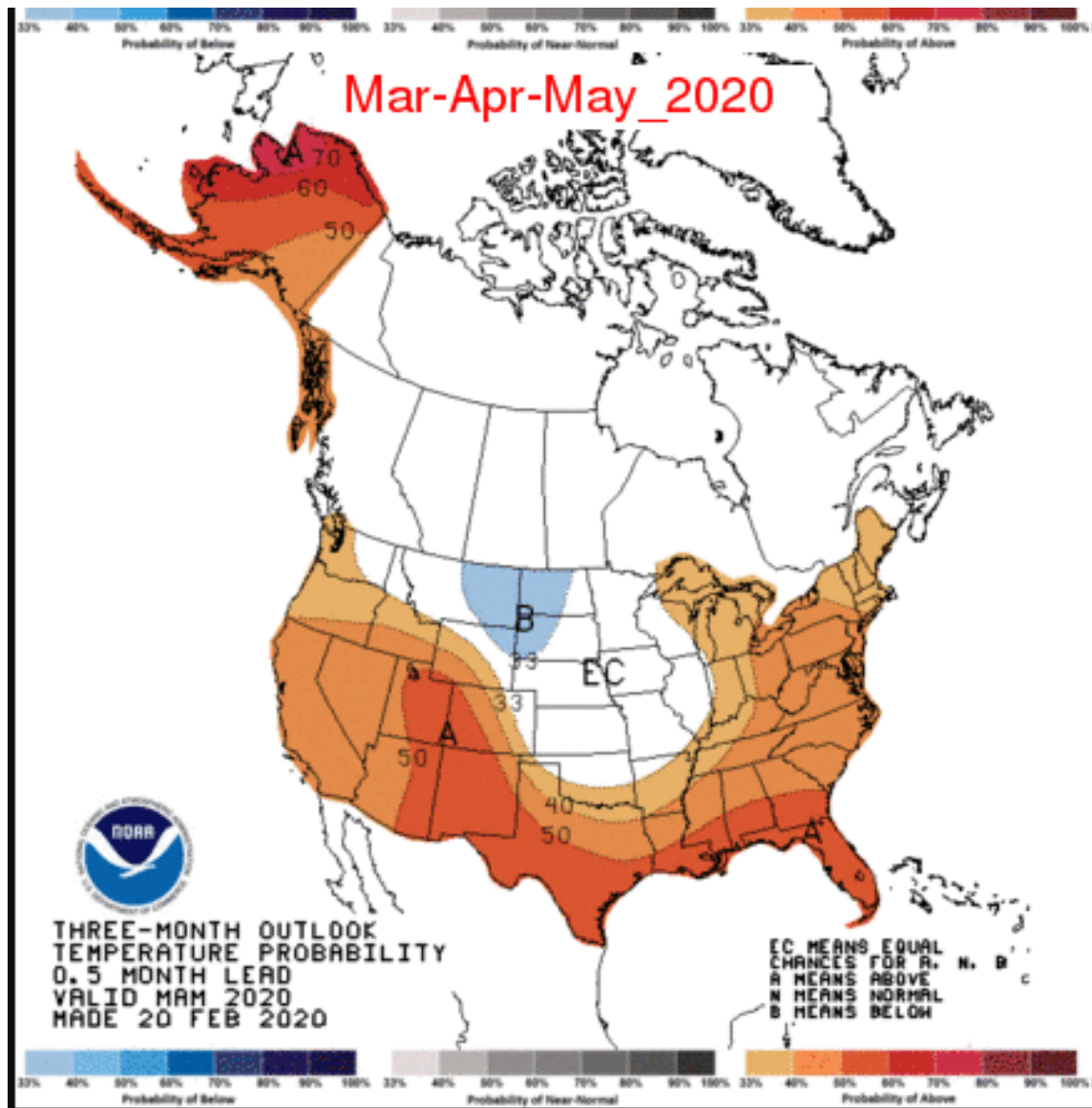
# National

## Federal Energy Regulatory Commission Market Assessments



# NOAA 3 Month Outlook

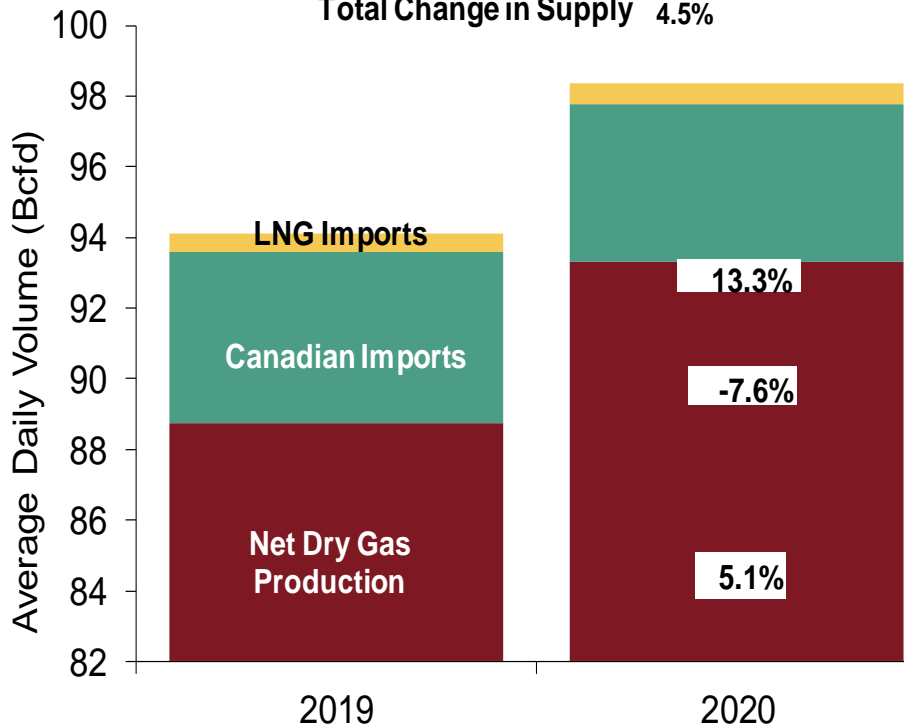
Federal Energy Regulatory Commission Market Assessments



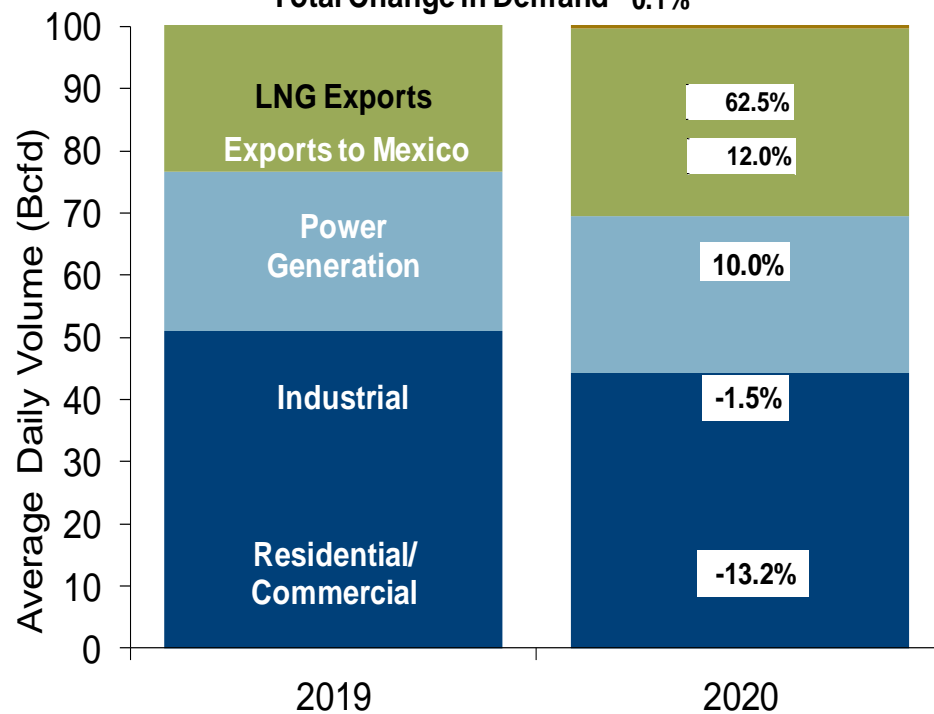
# U.S. NG Supply and Demand Feb-19 YTD vs. Feb-20 YTD

Federal Energy Regulatory Commission **Market Assessments**

**US Natural Gas Supply**  
Total Change in Supply 4.5%



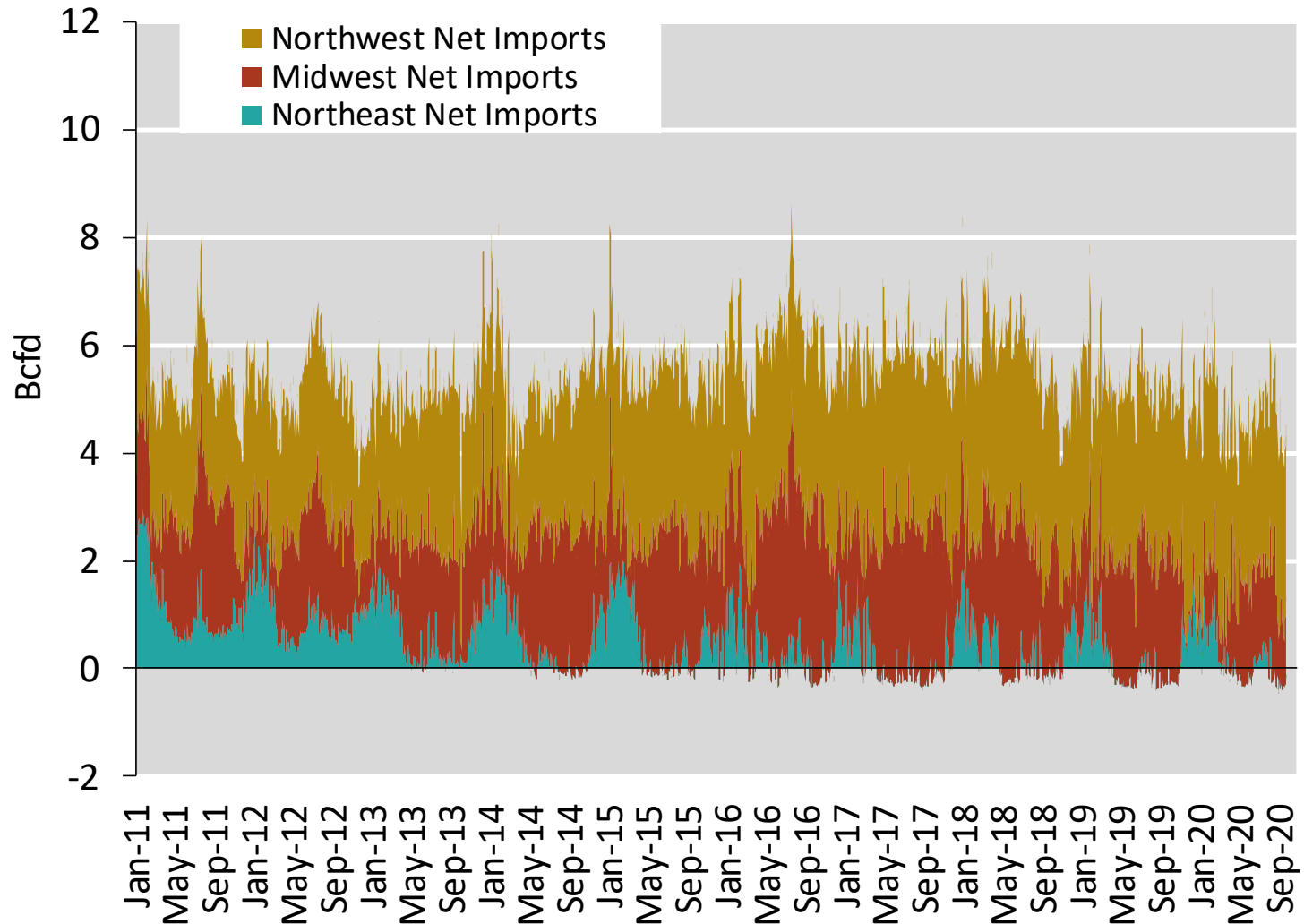
**US Natural Gas Demand**  
Total Change in Demand 0.1%



Note: Balance includes all amounts not attributable to other categories.  
Source: Derived from *Bentek Energy* data

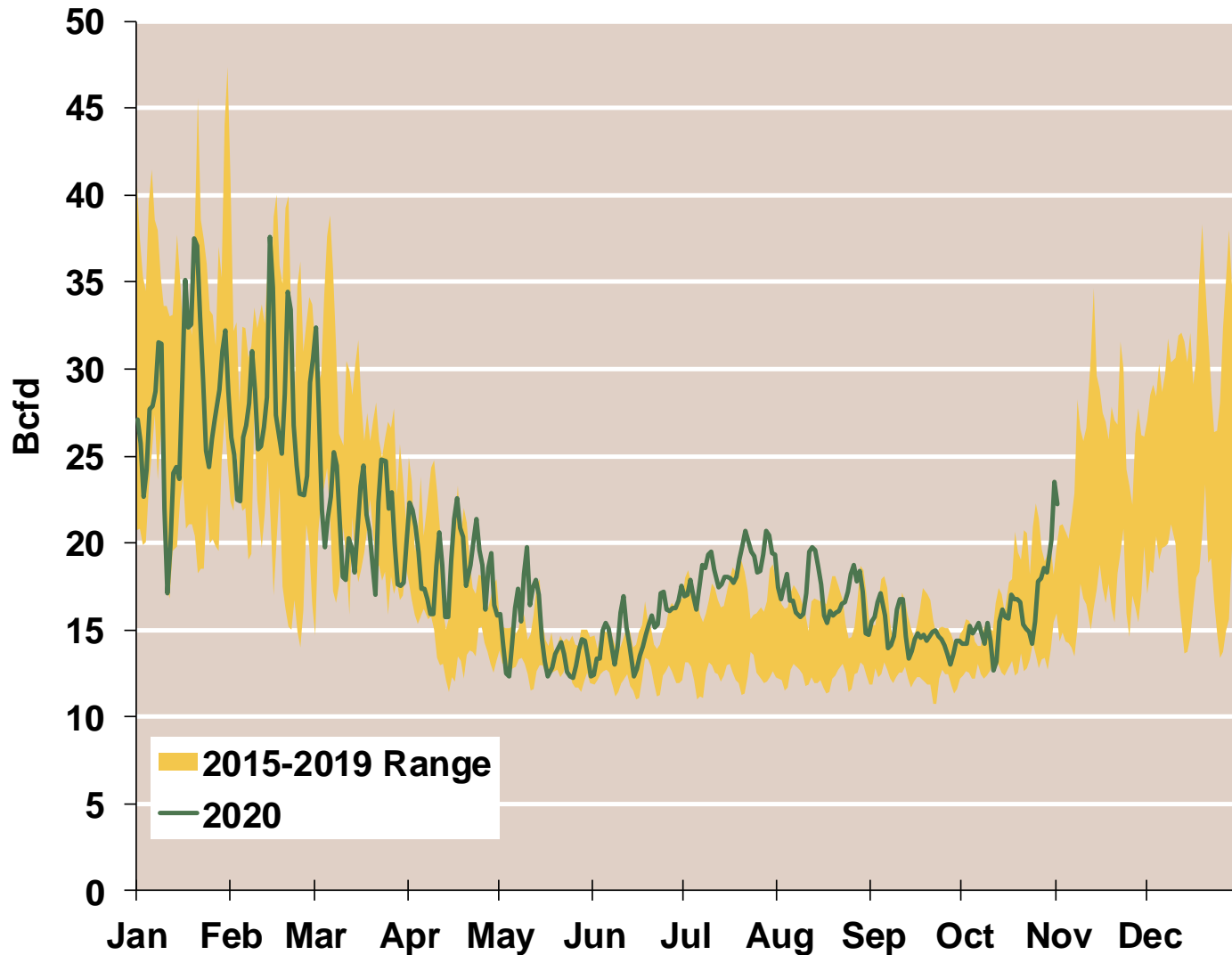
# Regional Canadian Imports

Federal Energy Regulatory Commission **Market Assessments**



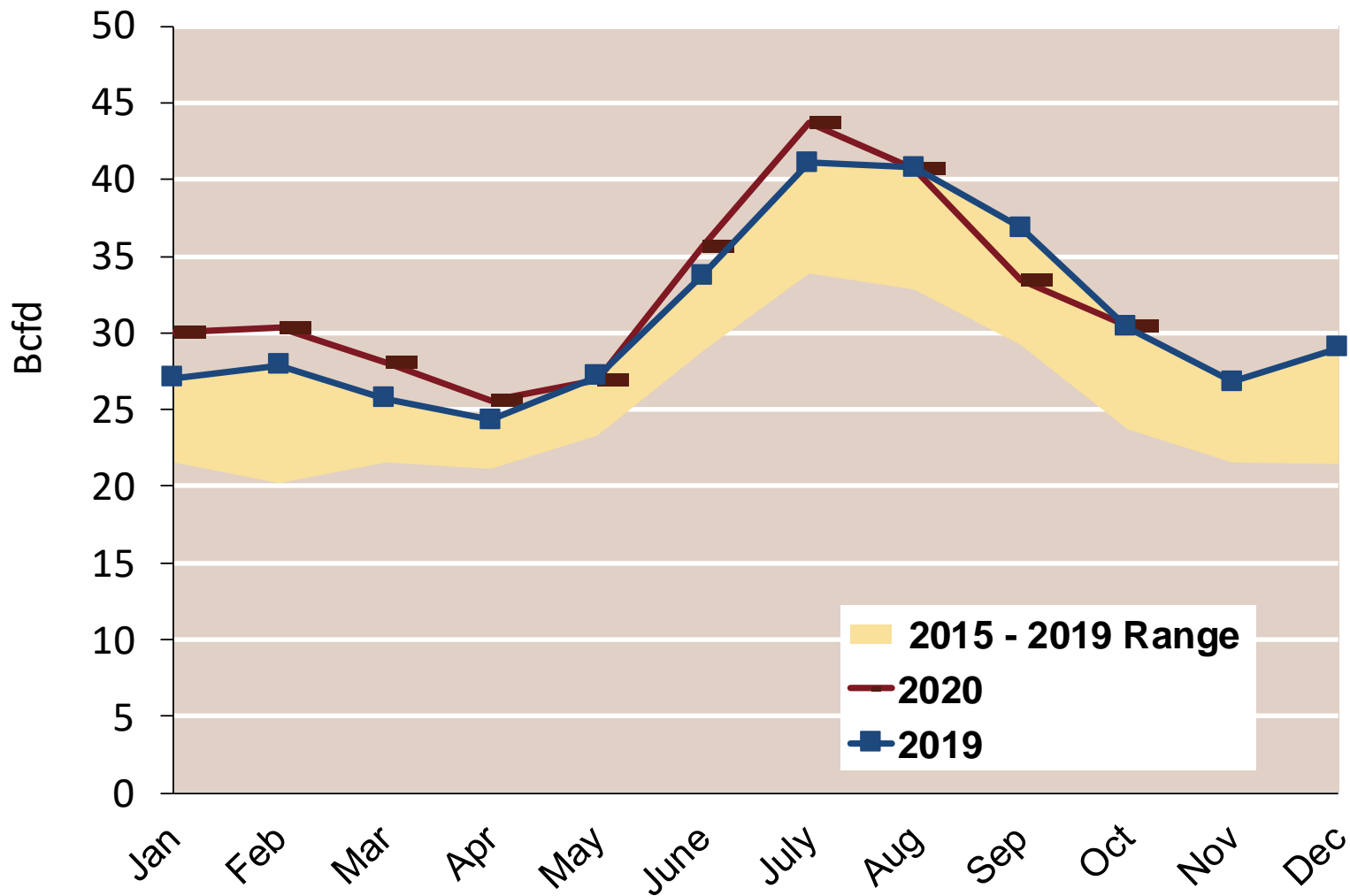
# Total U.S. Natural Gas Demand All Sectors

Federal Energy Regulatory Commission **Market Assessments**



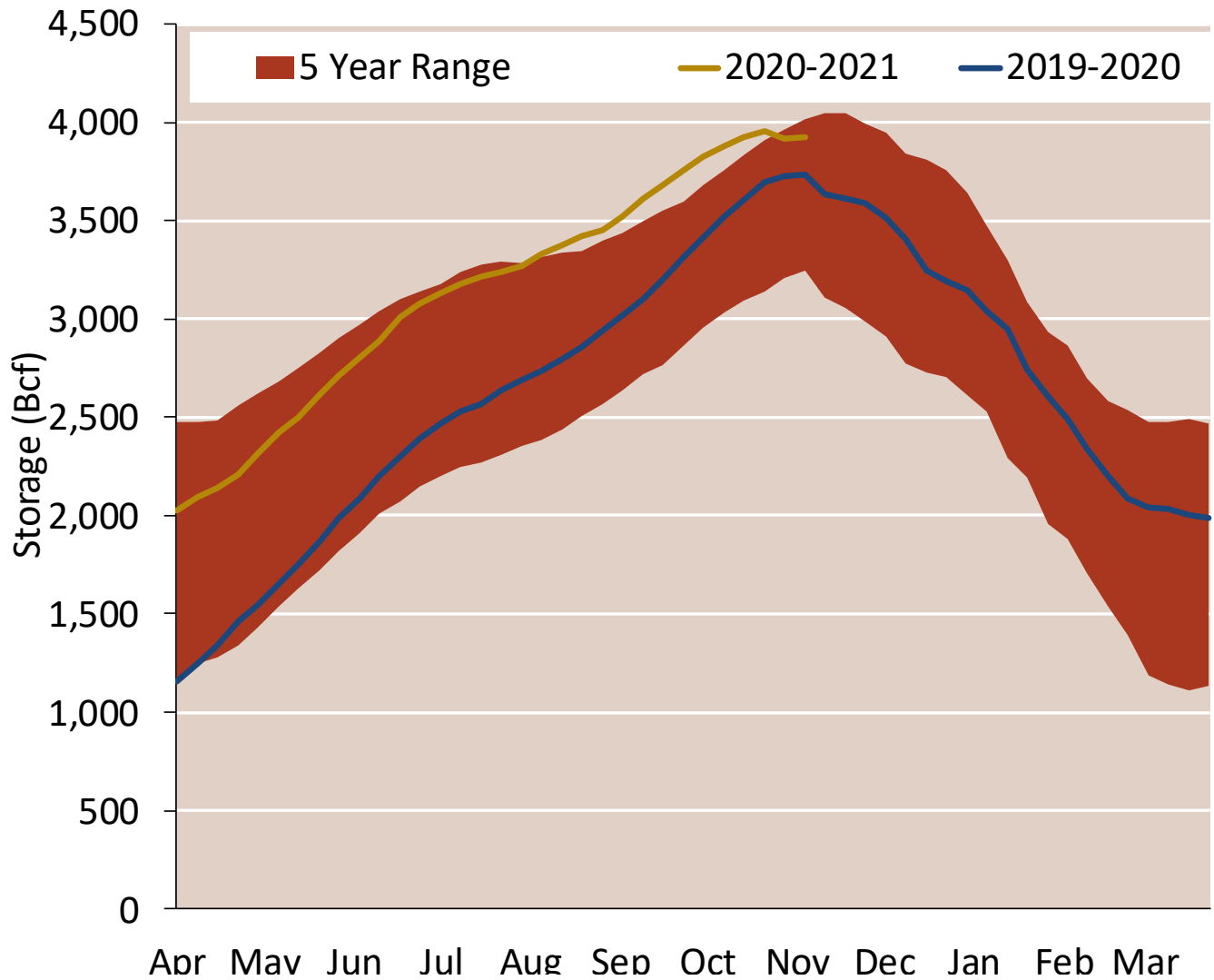
# U.S. Natural Gas Consumption for Power Generation

Federal Energy Regulatory Commission **Market Assessments**



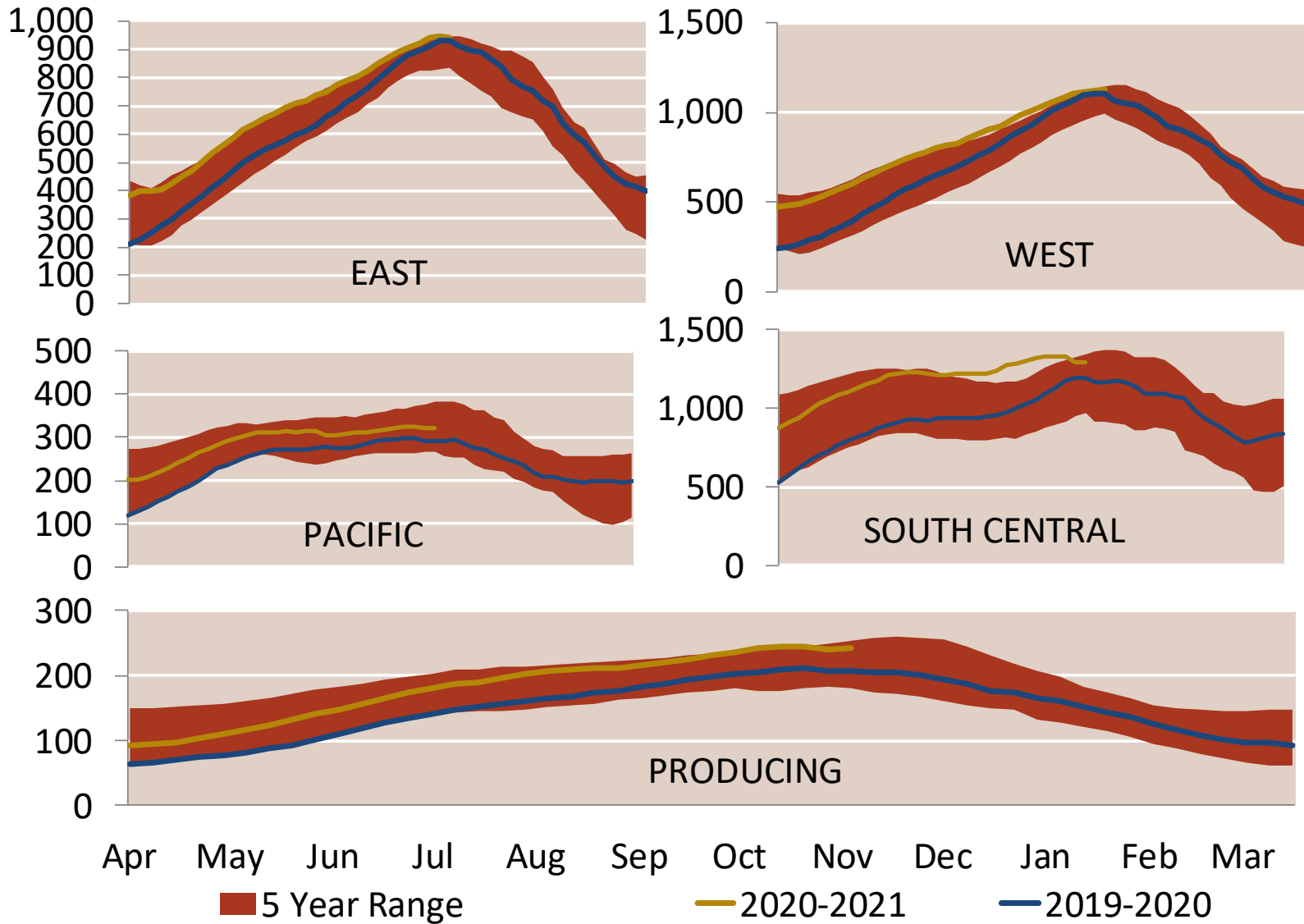
# EIA Storage Inventories

Federal Energy Regulatory Commission **Market Assessments**



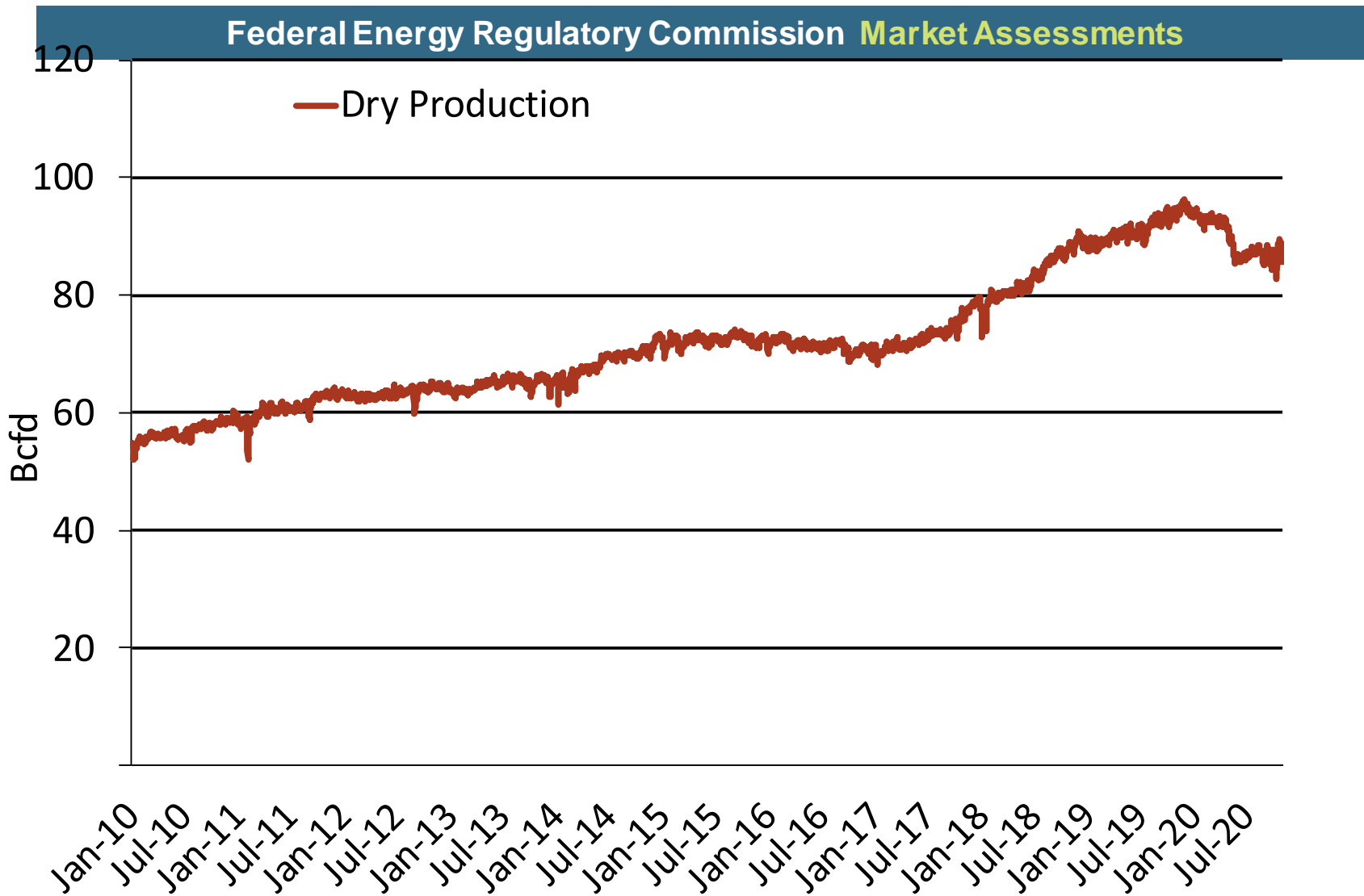
# EIA Storage Inventories

Federal Energy Regulatory Commission **Market Assessments**





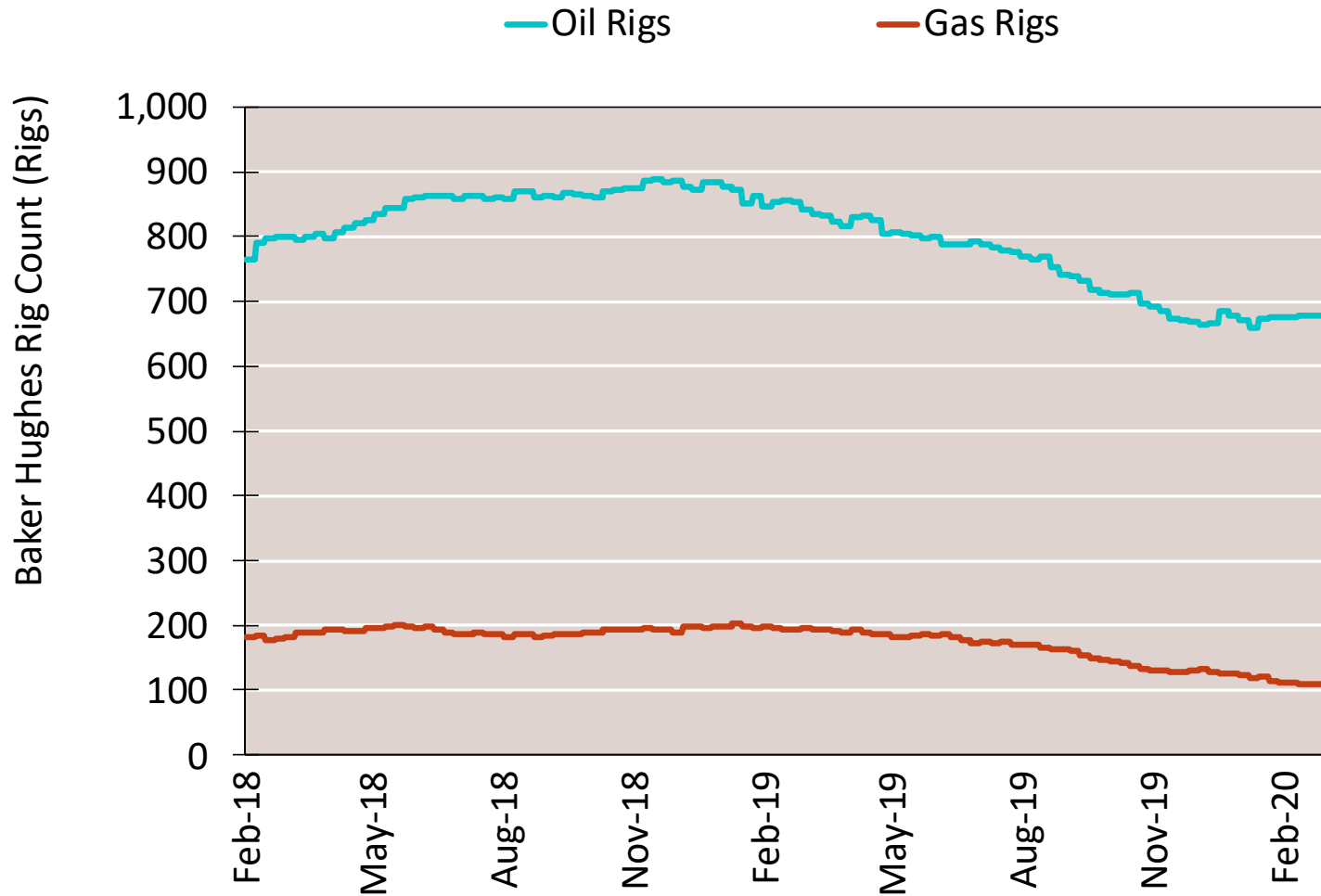
# Monthly U.S. Dry Gas Production – Lower 48 States



Note: Prior to July 2010, chart was derived from a combination of *EIA* and *Bentek Energy* data  
Source: Derived from *Bentek Energy* data

# NG Rigs by Fuel Type

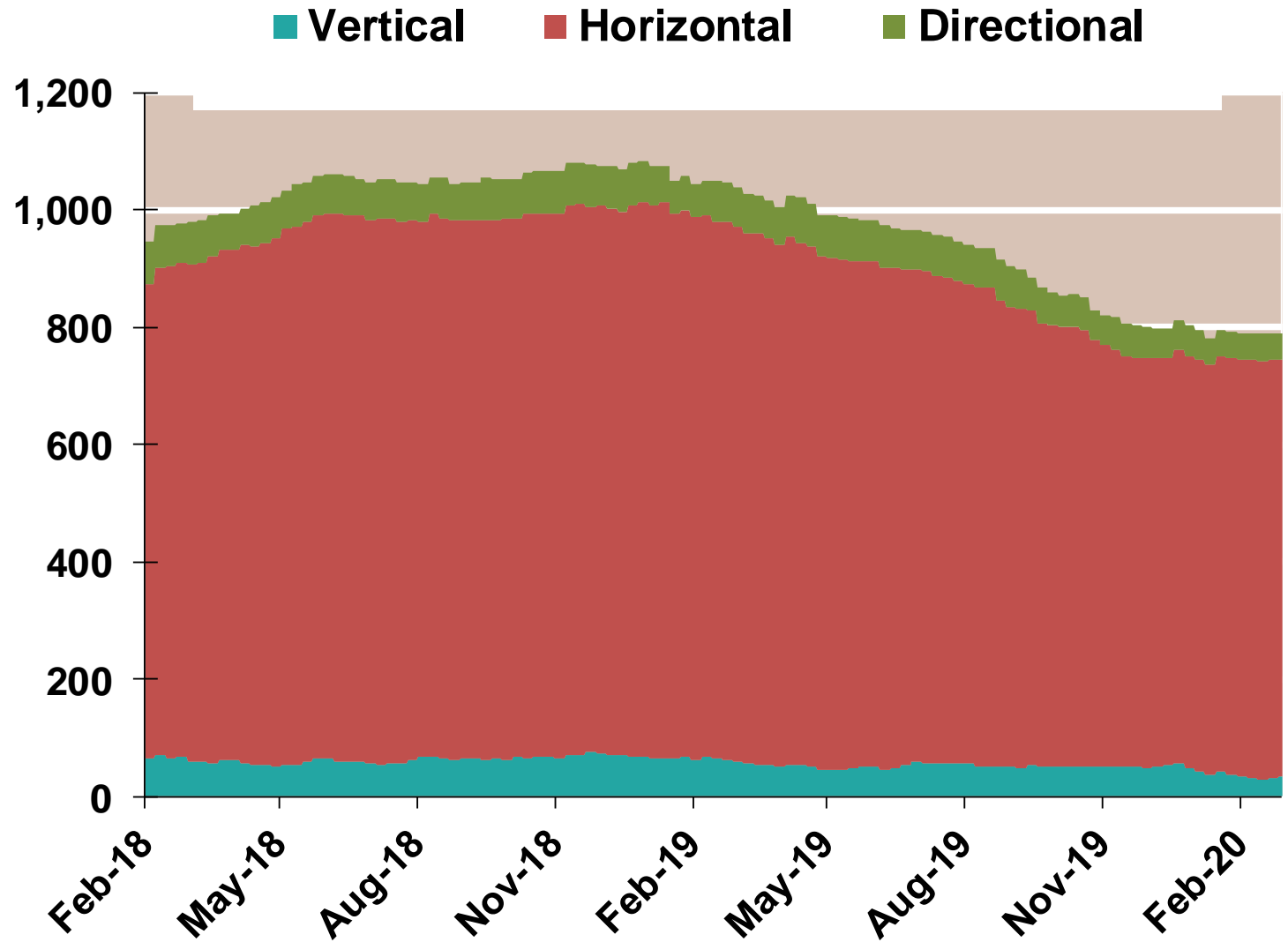
Federal Energy Regulatory Commission **Market Assessments**



# NG Rig by Direction

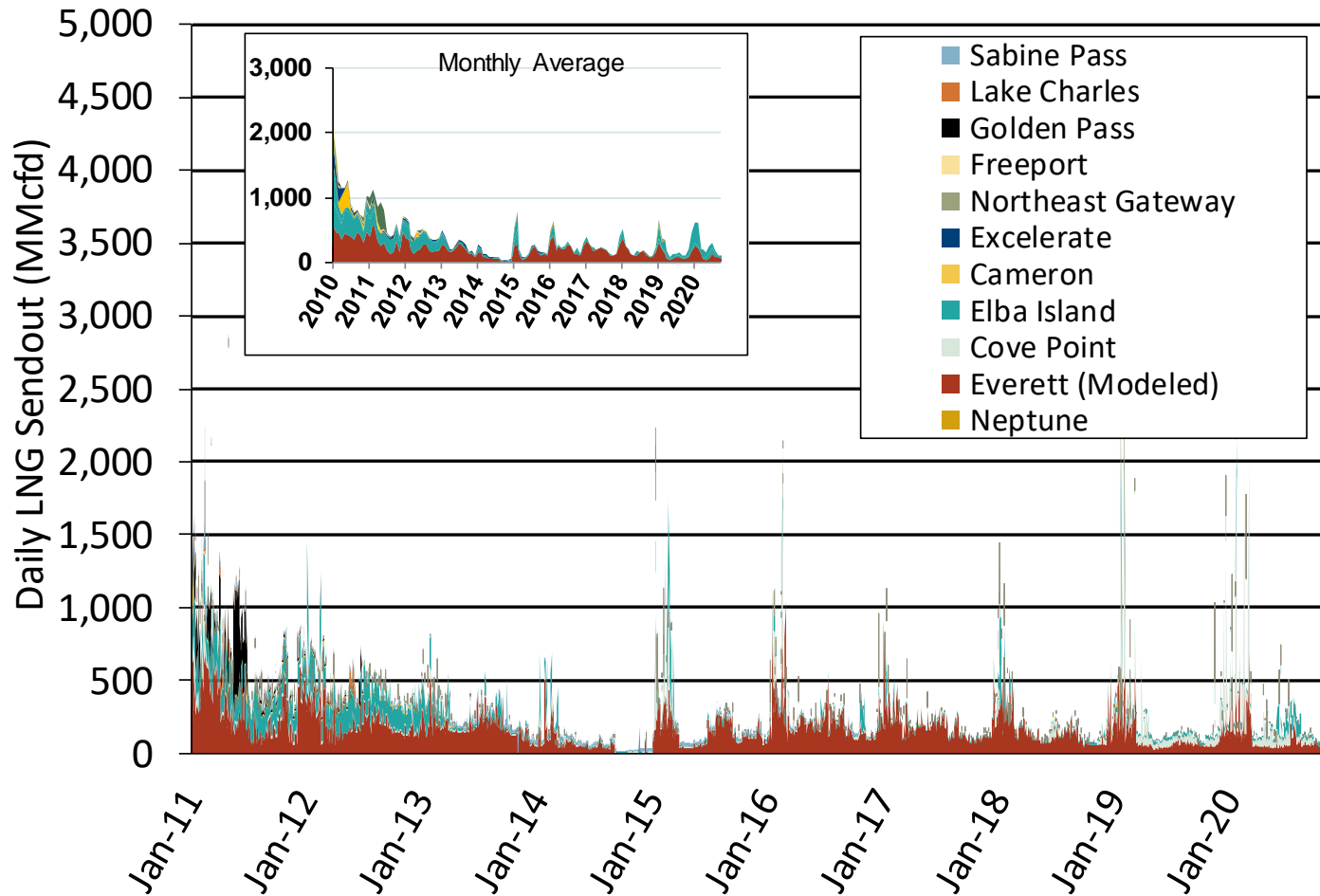
Federal Energy Regulatory Commission **Market Assessments**

Baker Hughes Rigs By Drill Type



# Daily Gas Sendout from Existing U.S. LNG Facilities

Federal Energy Regulatory Commission **Market Assessments**



Notes: Everett data includes flows onto the AGT and TGP interstate lines, plus estimates of flows to the Mystic 7 power plant, Keyspan Boston Gas, and LNG trucked out of the terminal. Excludes flows to the Freeport LNG which flows via intrastate pipelines and flows to the Mystic 8 and 9 power plants.

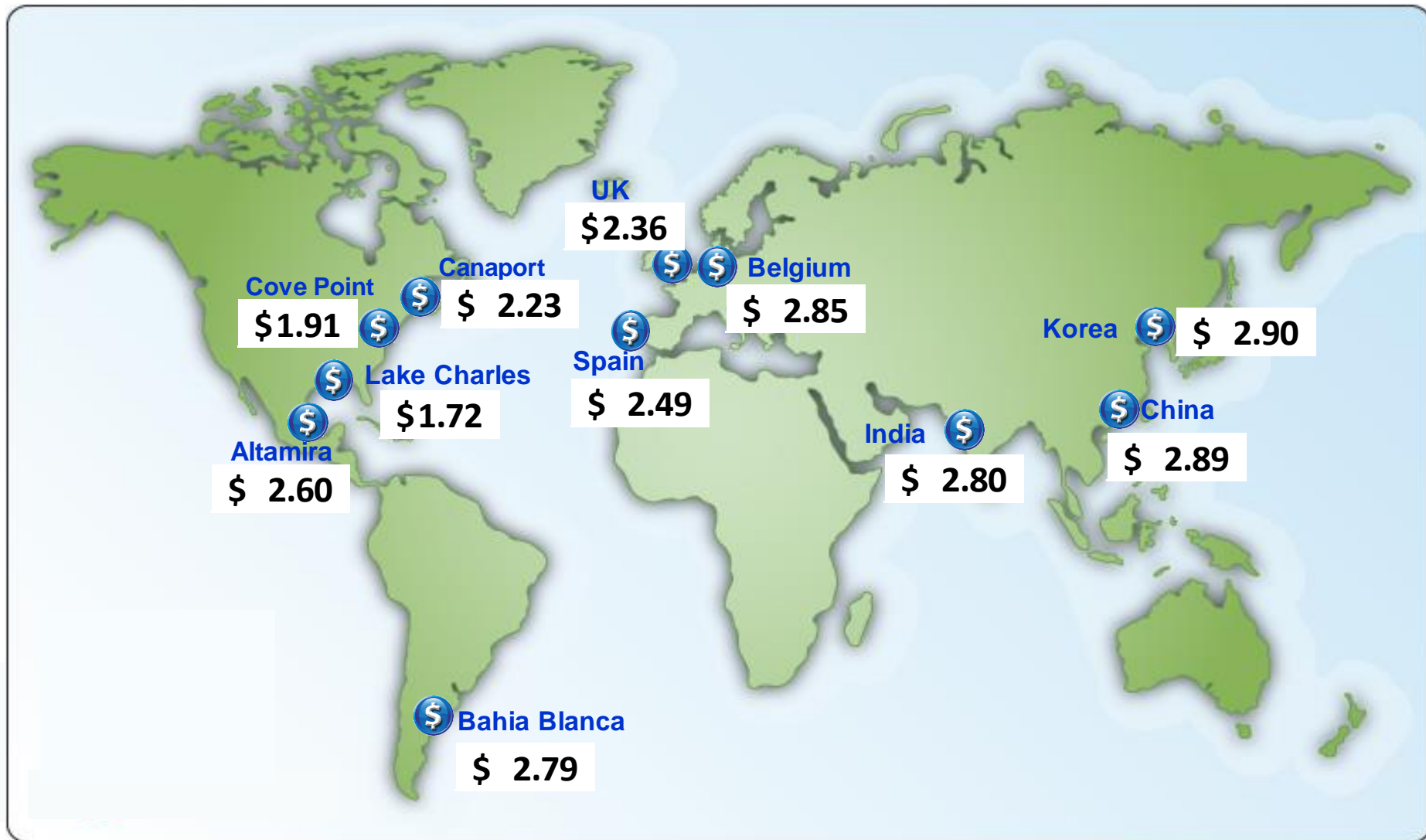
Source: Derived from *Bentek Energy* data

Updated

Mar-2020

# World LNG Estimated Landed Prices: Feb-20

Federal Energy Regulatory Commission Market Assessments



Source: *Waterborne Energy, Inc.* Data in \$US/MMBtu.

Note: Includes information and Data supplied by IHS Global Inc. and its affiliates ("IHS"); Copyright (publication year) all rights reserved. Prices are the monthly average of the weekly landed prices for the listed month. Landed prices are based on a netback calculation.

Updated:

# U.S. Exports of LNG

Federal Energy Regulatory Commission **Market Assessments**

